

HAMMERHEAD TOWER CRANE



Specifications:

- ▶ Max jib length: 263 ft
- ▶ Capacity at max length: 8,598 lb
- ▶ Max capacity: 70,548 lb

WORKS FOR YOU.™

KEY

Zeichenerklärung · Légende · Leyenda · Legenda · Legenda · Условные обозначения



Hoisting · Heben · Levage · Elevación · Sollevamento · Elevação · Подъем



Trolleying · Katzfahren · Distribution · Distribución · Traslazione carrello · Distribuição · Передвижение каретки



Slewing · Schwenken · Orientation · Orientació · Rotazione · giro · Поворот



Travelling · Schienenfahren · Translation · Traslación · Traslazione · Móvel · Передвижение



Directive on noise level · Richtlinie für den Schall-Leistungspegel · Directive sur le niveau acoustique · Directiva sobre el nivel acustico ·
Direttiva sul livello acustico · Diretiva sobre nível de ruídos · Директива по уровню шума



Consult us · Auf Anfrage · Nous consulter · Consultarnos · Consultateci · Consulte-nos · Проконсультироваться с нами



Power requirements · g eforderte Stromstärke · Puissance totale nécessaire · Potencia necesaria · Potenza totale richiesta ·
Requisitos de energia · Требования по питанию



Power supply · Stromversorgung · Alimentation · Alimentación · Alimentazione · Fonte de alimentação · Питание



In service · In Betrieb · En service · En servicio · In servizio · Em serviço · При работе



Out of service · Außer Betrieb · Hors service · Fuera de servicio · Fuori servizio · Fora de serviço · В режиме простоя



Max. under hook height · Höchste Hakenhöhe · Hauteur maxi. sous crochet · Maxima altura bajo gancho ·
Altezza max. sotto gancio · Alt. máx. sob o gancho · Макс высота крюка



Without load, without ballast, max. jib and max. height · Ohne Last und Ballast, mit Maximalausleger und Maximalhöhe ·
A vide, sans lest, avec flè he et hauteur maximum · Sin carga, sin lastre, con pluma y altura máxima · A vuoto, senza zavorra,
braccio max., altezza max. · Sem carga, sem lastro, lança máxima, altura máxima · Без груза, без балласта, на макс.
Длине вспомогательной стрелы и макс. Высоте



Counterweight · g egengewicht · Lest de contre-flè he · Lastre de contra fle ha · Zavorra controbraccio · Contrapeso ·
Противовес

C25

EN 14439-C25 out of service proof with LC1 & LC3 - wind coming from each side 100 Km/h - For different requirement please
contact us · EN 14439 - C25 außer Betrieb mit LC1 & LC3 - Wnd von jeder Seite 100 km/h - für abweichende Anforderungen
kontaktieren Sie uns bitte · EN14439 - C25 hors service avec LC1 & LC3 - vent 100km/h de chaque côté - Nous contacter
pour des caractéristiques différentes · EN 14439 - C25 fuera de servicio con LC1 & LC3 - viento de cada lado 100 km/h -
contáctenos si necesita más información · EN 14439 - C25 fuori servizio con LC1 & LC 3 - vento in ogni direzione 100 km/h -
contattateci per differenti richieste · EN 14439 - C25 fora de serviço com LC1 e LC3 - vento de cada lado 100 kmh - para
pedidos especiais, entre em contato conosco · EN14439 - C25 не совместим с LC1 & LC3 - ветровая нагрузка не более
100км/ч - для уточнения спецификаций обращайтесь, пожалуйста, к нам

CONTENTS

SK 575-32

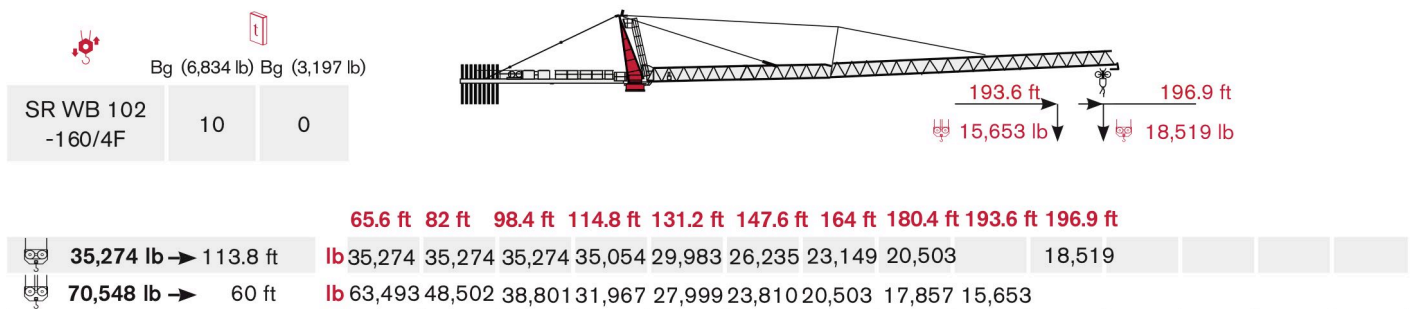
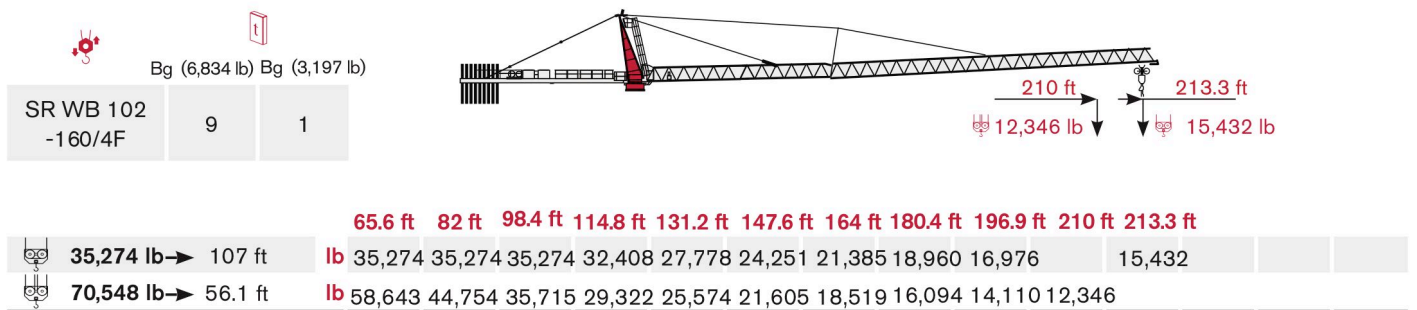
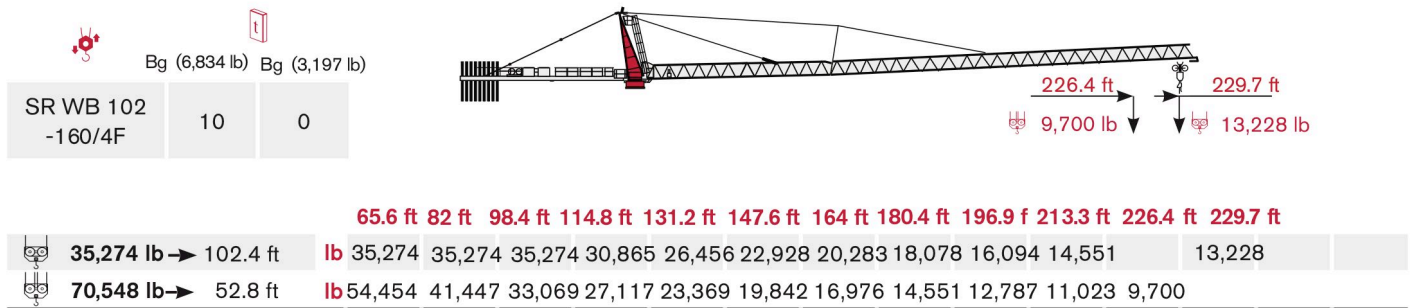
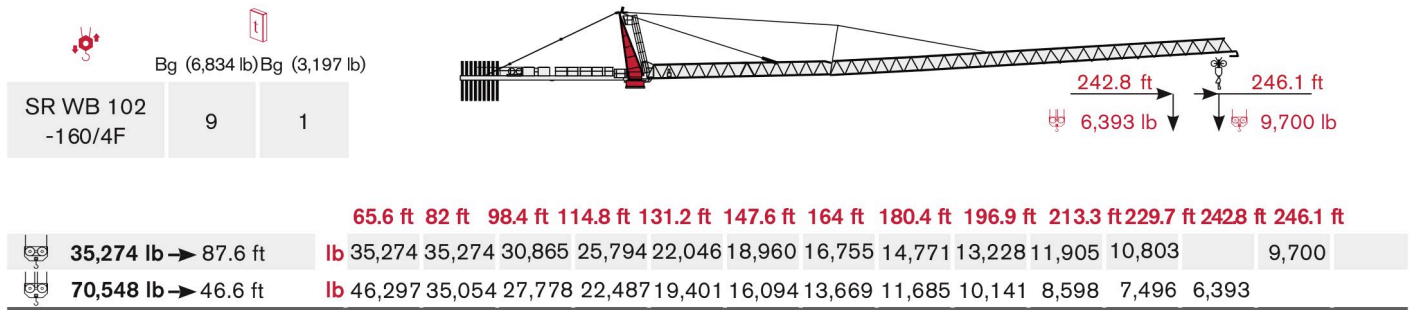
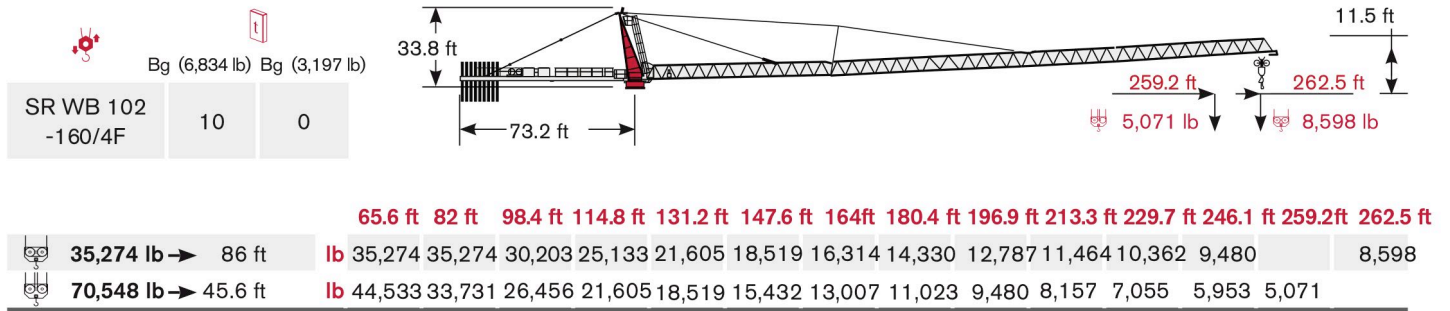
Inhalt · Contenu · Contenido · Indice · Sumário · Содержание

Page · Seite · Page · Página · Pagina · Página · Страница:

Load Diagram · Lastkurven · Courbes de charges · Curvas de cargas · Diagramma di portata · Diagrama de carga · Диаграмма грузоподъёмности	4
Tower · Turm · Tour · Torre · Torre · Torre · Башня	6
Mechanisms · Antriebe · Mécanismes · Mecanismos · Meccanismi · Mecanismo · Механизм	8
Transportation · Transport · Transport · Transporte · Trasporto · Transporte · Транспортировка	9

LOAD DIAGRAM

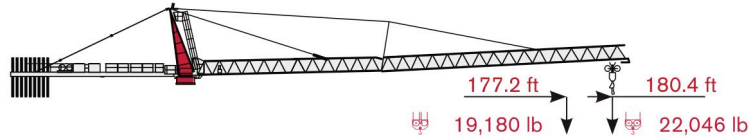
Lastkurven · Courbes de charges · Curvas de cargas · Diagramma di portata · Diagrama de carga · Диаграмма грузоподъёмности






 Bg (6,834 lb)Bg (3,197 lb)

SR WB 102 -160/4F	9	0
----------------------	---	---



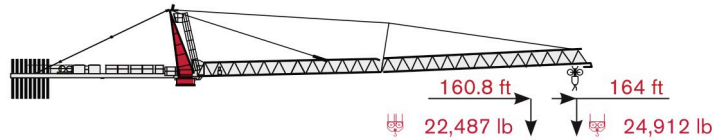
65.6 ft 82 ft 98.4 ft 114.8 ft 131.2 ft 147.6 ft 164 ft 177.2 ft 180.4 ft

 35,274 lb → 120.4 ft	lb 35,274 35,274 35,274 35,274 31,967 27,999 24,692	22,046							
 70,548 lb → 63 ft	lb 67,241 51,368 41,226 34,172 29,762 25,353 22,046 19,180								




 Bg (6,834 lb)Bg (3,197 lb)

SR WB 102 -160/4F	8	1
----------------------	---	---



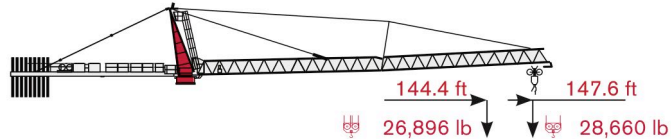
65.6 ft 82 ft 98.4 ft 114.8 ft 131.2 ft 147.6 ft 160.8 ft 164 ft

 35,274 lb → 121.4 ft	lb 35,274 35,274 35,274 35,274 32,188 28,219	24,912							
 70,548 lb → 64 ft	lb 68,564 52,470 42,108 34,833 30,424 26,015 22,487								






 Bg (6,834 lb)Bg (3,197 lb)

SR WB 102 -160/4F	8	0
----------------------	---	---



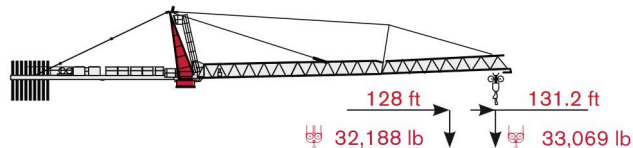
65.6 ft 82 ft 98.4 ft 114.8 ft 131.2 ft 144.4 ft 147.6 ft

 35,274 lb → 123.4 ft	lb 35,274 35,274 35,274 35,274 32,849	28,660							
 70,548 lb → 65.6 ft	lb 70,548 54,013 43,431 35,935 31,526 26,896								

 Bg (6,834 lb)Bg (3,197 lb)

SR WB 102 -160/4F	7	1
----------------------	---	---



65.6 ft 82 ft 98.4 ft 114.8 ft 128 ft 131.2 ft

 35,274 lb → 124 ft	lb 35,274 35,274 35,274 35,274	33,069							
 70,548 lb → 66.9 ft	lb 70,548 55,336 44,533 36,817 32,188								

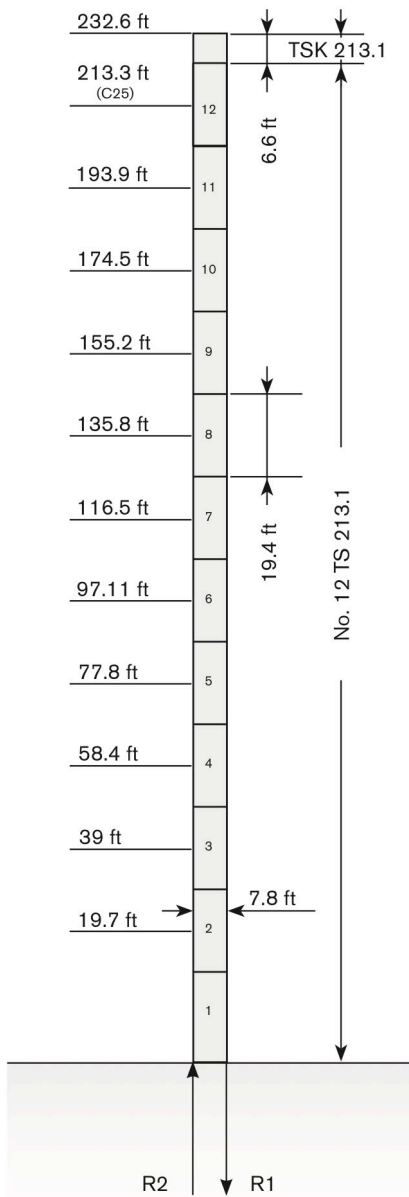
TOWER

Turn · Tour · Torre · Torre · Torre · Башня

Standard Configurations · Standardkonfiguration · Standard Implantations ·
 Implantaciones Standard · Installazioni Standard · Configuração padrão ·
 Стандартная конфигурация крана

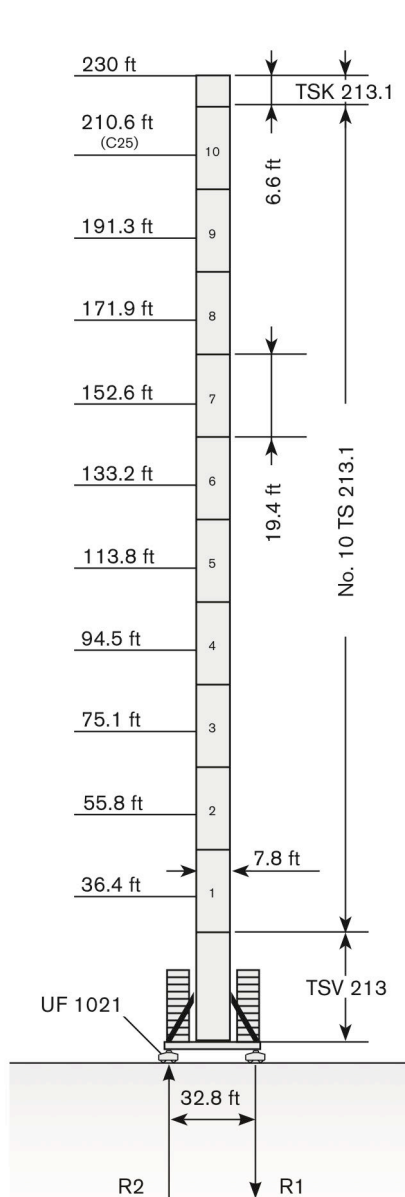
Basement: A

	●	◊
R1	-3400 kN	-3136 kN
R2	2538 kN	2431 kN
	1125 kN	



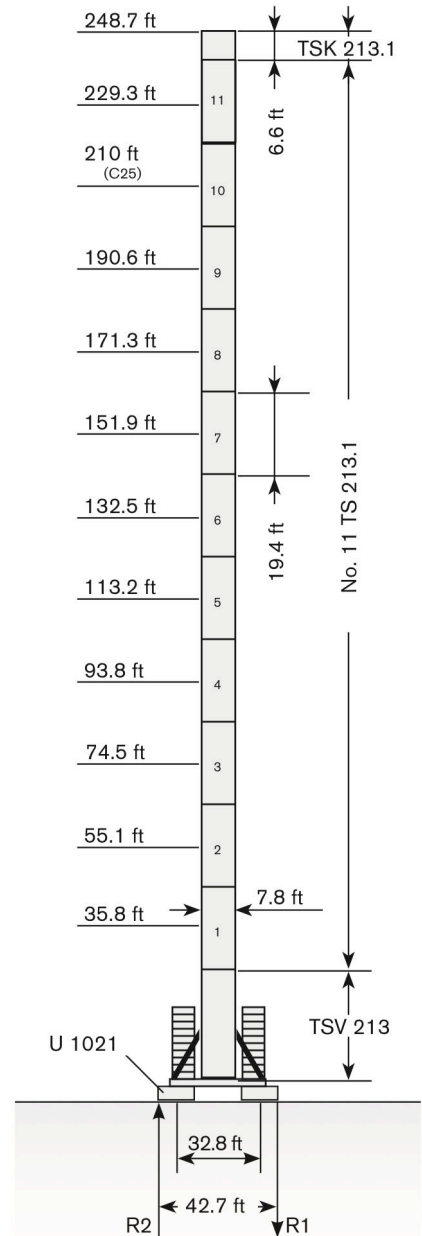
Basement: E

	●	◊
R1	-1107 kN	-1251 kN
R2	0 kN	0 kN
	1209 kN	



Basement: F

	●	◊
R1	-1110 kN	-1251 kN
R2	0 kN	0 kN
	1257 kN	



Max. under hook height · Höchste Hakenhöhe · Hauteur maxi. sous crochet · Maxima altura bajo gancho · Altezza max. sotto gancio ·
 Alt. máx. sob o gancho · Макс высота крюка

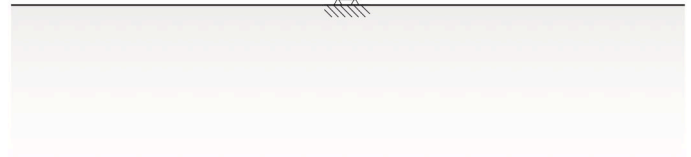
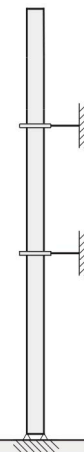
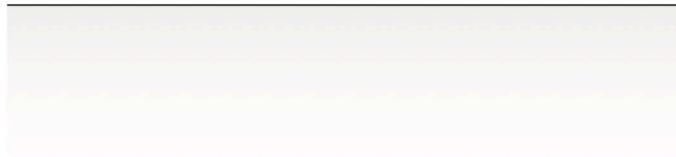
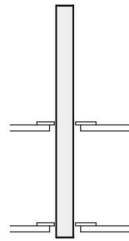
Different heights and tower combinations are available; please consult us · Andere Höhen und Turmkombinationen auf Anfrage · Différentes hauteurs et combinaisons de tour sont disponibles; nous consulter · Hay diferentes alturas y combinaciones de torre disponibles. Consúltenos · Altezze diverse e combinazioni di torre sono disponibili; consultateci · Diferentes alturas e combinações de torres disponíveis; fale conosco · Возможны другие сочетания высоты и конфигурации башни; проконсультируйтесь с нами



**Other configurations · Aufstellmöglichkeiten · Autres Implantations ·
Otras Implantaciones · Altre Installazioni · Outras configurações ·
Другие конфигурации**

Bottom climbing crane · Kletterkran im Gebäude · Télescopage sur dalles · Telescopage grúa trepadora · Gru climbing · Guindaste automontante interno · Самоподъемный кран

Crane tied to the structure · Geankerter Kran · Grue ancrée · Grúa anclada · Gru ancorata · Guindaste ancorado na estrutura · Кран, крепящийся к сооружению



Different heights and tower combinations are available; please consult us ▪ Andere Höhen und Turmkombinationen auf Anfrage ▪ Différentes hauteurs et combinaisons de tour sont disponibles; nous consulter ▪ Hay diferentes alturas y combinaciones de torre disponibles. Consúltenos ▪ Altezze diverse e combinazioni di torre sono disponibili; consultateci ▪ Diferentes alturas e combinações de torres disponíveis; fale conosco ▪ Возможны другие сочетания высоты и конфигурации башни; проконсультируйтесь с нами






MECHANISMS

Antriebe · Mécanismes · Mecanismos · Meccanismi · Mecanismo · Механизм

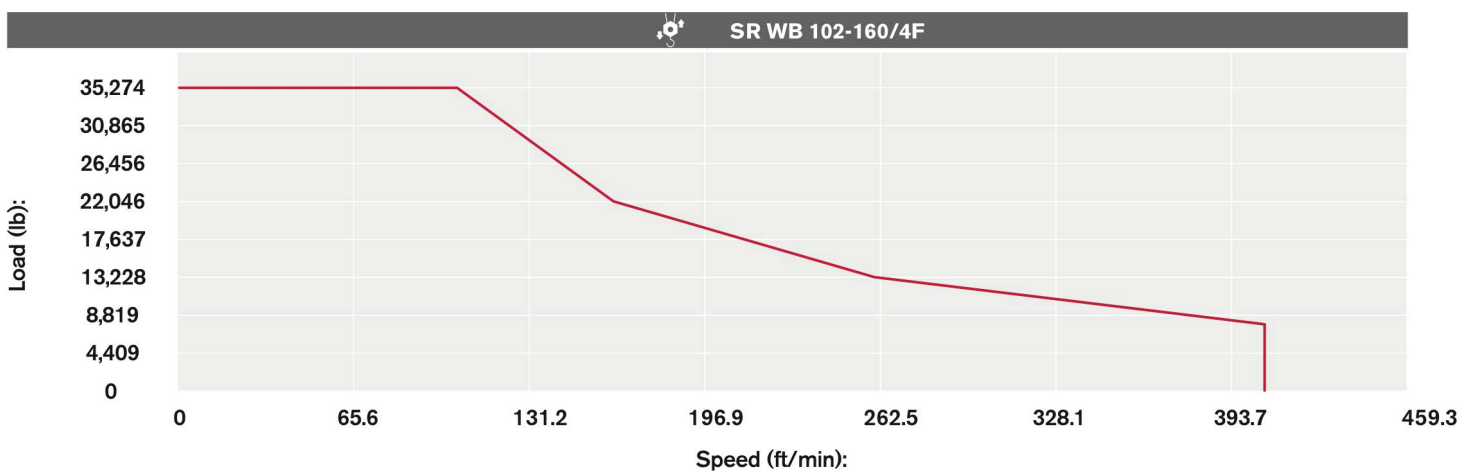
Power supply · Stromversorgung · Alimentation · Suministro eléctrico · Alimentazione · Requisitos de energia · Требования по питанию

	SR WB 102-160/4F	 170 kVA	 480V - 60Hz / 400V - 50Hz - 3 ph
---	------------------	---	--

Hoisting · Heben · Levage · Elevación · Sollevamento · Elevação · Подъем

			lb	ft/min	kW	
	SR WB 102-160/4F		35,274	0 → 105	102	
			22,046	0 → 164		
			13,228	0 → 262.5		
			7,716	0 → 413.4		
			70,548	0 → 52.5		
			44,093	0 → 85.3		
			26,456	0 → 131.2		
			15,432	0 → 206.7		

Hoisting Speed · Heben Geschwindigkeit · Vitesse de Levage · Velocidad de Elevación · Velocità di Sollevamento · Velocidade de içamento · Скорость подъема



Additional Specifications · Weitere Leistungsdaten · Spécifications additionnelles · Otras prestaciones · Altre movimentazioni · Especificações adicionais · Дополнительные спецификации

	FU 9-320/4	0 → 252.6 ft/min	1 x 9,0 kW
	K WB 120/4	0 → 0,75 min ⁻¹	2 x 100 Nm (131.2 ft - 196.9 ft) 3 x 100 Nm (213.3 ft - 262.5 ft)
	K FU 10-190/4	0 → 82 ft/min	4 x 7,5 kW



TRANSPORTATION

SK 575-32

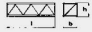


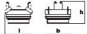
Transport · Transport · Transporte · Trasporto · Transporte · Транспортировка

Packing list


Undercarriage

SK 575-32	DESCRIPTION · BESCHREIBUNG · DESCRIPTION · DESCRIPCIÓN · DESCRIZIONE · DESCRIÇÃO · ОПИСАНИЕ	LENGTH · LÄNGE · LONGUEUR · LONGITUD · LUNGHEZZA · COMPRIMENTO · ДЛИНА	WIDTH · BREITE · LARGEUR · ANCHURA · LARGHEZZA · LARGURA · ШИРИНА	HEIGHT · HÖHE · HAUTEUR · ALTURA · ALTEZZA · ALTURA · ВЫСОТА	WEIGHT · GEWICHT · POIDS · PESO · PESO · ВЕС
	U1021 UNDERCARRIAGE	44 ft	9.5 ft	3.8 ft	26,764 lb
	TS 213 FOUNDATION ANCHOR	2 ft	2 ft	5.3 ft	847 lb


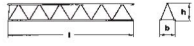
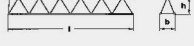
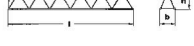
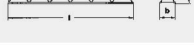

Tower

	TOWER SECTION TS 213.1	19.5 ft	7.8 ft	7.8 ft	9,789 lb
	TOWER SECTION TSV 213.1	39.4 ft	10.3 ft	10.3 ft	31,085 lb
	TOWER SECTION TSK 213	10.4 ft	8.7 ft	7.1ft	6,715 lb
	SLEWING UNIT	11.7 ft	7.1 ft	7.4 ft	22,157 lb

Cab

	CAB EVO 15	12 ft	7.2 ft	8.1 ft	3,699 lb
---	------------	-------	--------	--------	----------

Upper Part


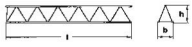



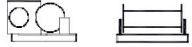
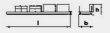





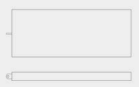

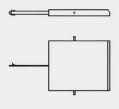
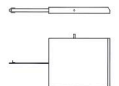
	JIB SECTION NO.1	39 ft	6.5 ft	7 ft	7,496 lb
	JIB SECTION NO.2	40.5 ft	6.5 ft	7.3 ft	8,863 lb
	JIB SECTION NO.3	38.8 ft	6.5 ft	7.5 ft	5,423 lb
	JIB SECTION NO.4	18.7 ft	6.5 ft	6.9 ft	5,357 lb
	JIB SECTION NO.5	35 ft	6.5 ft	6.9 ft	5,203 lb
	JIB SECTION NO.6	35.4 ft	6.5 ft	6.3 ft	4,277 lb

WORKS FOR YOU.™

TRANSPORTATION

Transport · Transport · Transporte · Trasporto · Transporte · Транспортировка

Packing list

SK 575-32	DESCRIPTION · BESCHREIBUNG · DESCRIPTION · DESCRIPCIÓN · DESCRIZIONE · DESCRIÇÃO · ОПИСАНИЕ	LENGTH · LÄNGE · LONGUEUR · LONGITUD · LUNGHEZZA · COMPRIMENTO · ДЛИНА	WIDTH · BREITE · LARGEUR · ANCHURA · LARGHEZZA · LARGURA · ШИРИНА	HEIGHT · HÖHE · HAUTEUR · ALTURA · ALTEZZA · ALTURA · ВЫСОТА	WEIGHT · GEWICHT · POIDS · PESO · PESO · PESO · ВЕС
	JIB SECTION NO.7	33.5 ft	6.5 ft	6.2 ft	2,756 lb
	JIB SECTION NO.8	33.4 ft	6.5 ft	6.2 ft	1,698 lb
	JIB TIP SECTION	4.5 ft	6.6 ft	2.9 ft	661 lb
	TOWERTOP CPL	29.3 ft	7.2 ft	6.5 ft	9,326 lb
	OUTER JIB SUPPORT "A" FRAME	21.6 ft	5.7 ft	4.7 ft	562 lb
	HOIST WINCH SR WB 102-160/4F	9.2 ft	7.2 ft	4.9 ft	11,685 lb
	COUNTERJIB g 2	38.9 ft	7.4 ft	5.9 ft	7,496 lb
	COUNTERJIB g 1	31.1 ft	6.7 ft	5.6 ft	6,041 lb
	OUTER TROLLEY	6.6 ft	7.3 ft	4.6 ft	1,389 lb
	OUTER HOIST BLOCK	2.4 ft	0.5 ft	10.2 ft	1,786 lb
	INNER TROLLEY	6.6 ft	7.3 ft	4.6 ft	1,235 lb
	INNER HOIST BLOCK	2.7 ft	0.5 ft	5.1 ft	1,400 lb
	COUNTERWEIG HT BLOCK 3.10 T	14.7 ft	0.6 ft	5.9 ft	6,834 lb
	COUNTERWEIG HT FRAME 3.10 T	14.7 ft	0.6 ft	5.9 ft	617 lb
	COUNTERWEIG HT BLOCK 1.45 T	10.2 ft	0.6 ft	5.9 ft	3,197 lb
	COUNTERWEIG HT FRAME 1.45 T	10.2 ft	0.6 ft	5.9 ft	410 lb