

EVERYTHING YOU NEED AND MORE

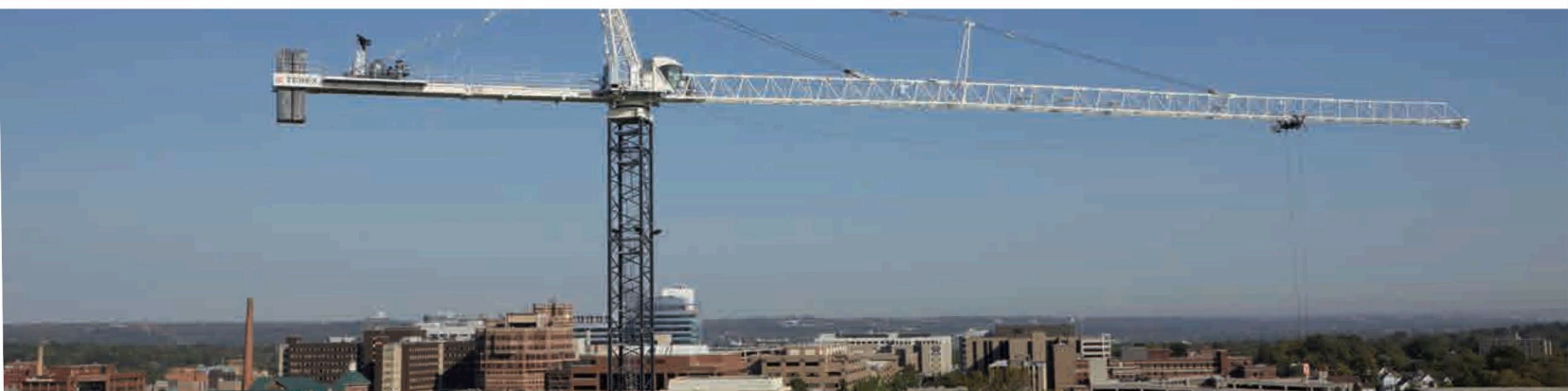


WORKS FOR YOU.™

MADE FOR YOU

Terex Cranes has upgraded its line of tower cranes with the addition of the new Terex SK 452-20 hammerhead tower crane. The new model has a maximum capacity of 22 US tons and a jib capacity of 2.75 US tons at 262 ft.

Crane model	Max. load (US t)	jib length (ft)																	
		131	148	164	180	197	213	230	246	262									
SK 415-20	22.0																		2.53
SK 452-20	22.0																		2.75
SK 575-32	35.3																		4.29



INCREASE YOUR DAILY OUTPUT

		66 ft	82 ft	98 ft	115 ft	131 ft	144 ft	148 ft	164 ft	180 ft	197 ft	210 ft	213 ft	230 ft	246 ft	259 ft	262 ft
22,100 lbs	→ 94 ft	22,100	22,100	20,929	17,326	14,652		12,597	10,962	9,644	8,531		7,602	6,807	6,129		5,525
44,200 lbs	→ 52 ft	33,084	24,929	19,625	15,890	13,127		10,984	9,304	7,912	6,763		5,812	4,973	4,265	3,754	
22,100 lbs	→ 131 ft	22,100	22,100	22,100	22,100	22,100		19,227	16,929	15,028	13,481		12,155				
44,200 lbs	→ 71 ft	44,200	37,194	29,747	24,509	20,619		17,636	15,249	13,326	11,713	10,608					
22,100 lbs	→ 148 ft	22,100	22,100	22,100	22,100	22,100		22,100									
44,200 lbs	→ 86 ft	44,200	44,200	37,548	31,161	26,410	23,426										

See datasheet for full charts

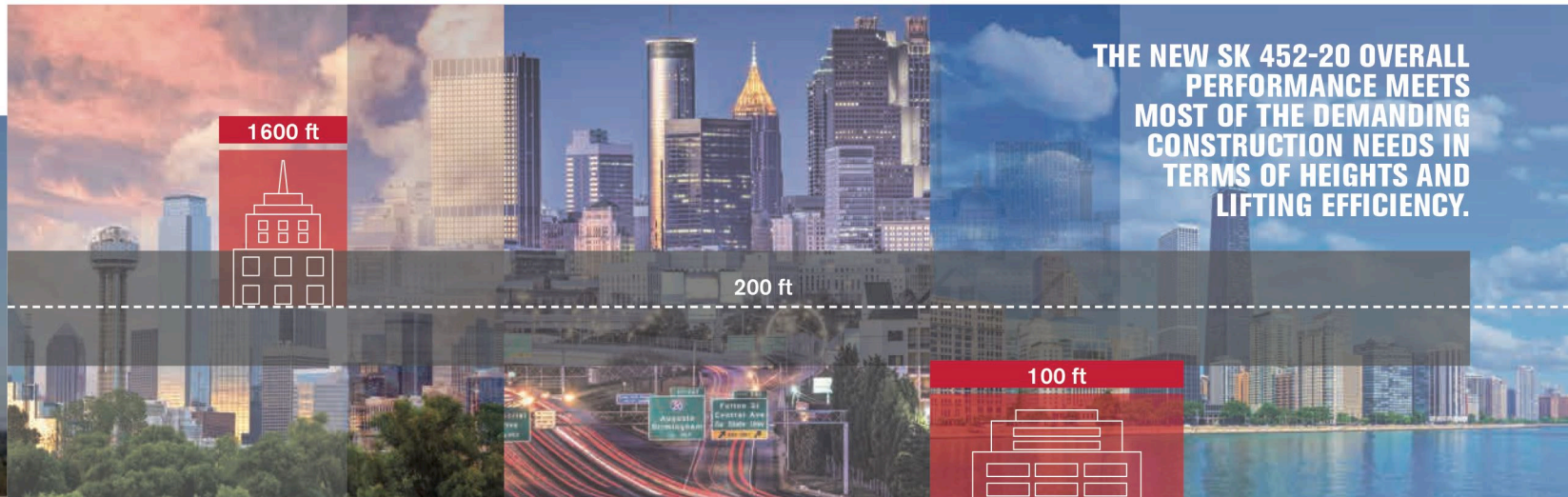
Equipped with a new hoist winch system, the SK 452-20 boasts an impressive maximum hoisting speed of **623 ft/min** and a drum capacity of **3,248 ft**. This combination of capacity and speed allows the crane operator to efficiently complete his or her daily work. All components feature proven and reliable technology. The control system has been designed to check and monitor all crane movements providing instant and accurate information. Hoisting, trolleying and slewing are provided with variable frequency mechanisms for outstanding performances. Trolley speeds range up to **312 ft/min** while slewing can reach up to **0.9 rpm**.



OUTSTANDING FREESTANDING AND UNDER HOOK HEIGHTS

SK 452-20

When the building's height is the most difficult challenge, the SK 452-20 is a solution for most of your jobsites. The design and strength of the towers, the capacity of the hoist drum and the speed of its winches deliver efficiently on the most demanding jobsite. Outstanding freestanding heights allow a good return on investment by fast erection time and reduced use of tie-in.



TEREX® TRANSFER MASTS

Our cranes can be equipped with a series of options which allow you to erect and operate the best tower crane for your needs. One of these options is the Transfer Mast system. Terex Transfer Masts let you do more with less.

Connect any two tower crane systems from Terex and/or our legacy brands, Peiner and Comedil, to form a new versatile and productive tower crane system - and you will gain the benefits of both systems and more.

You will benefit from:

- Improved freestanding capabilities.
- Reduced assembly time - no need for anchoring collars.
- A wide range of combinations using varying tower sections and upper parts help meet the exact needs of the job.
- A high return on investment through improved utilization of existing tower system sections in inventory.

Transfer mast line			
TS16-TS12	TS16-TS21	TS23-TS21	TS23-H20
HD23-TS23	HD23-H20	HD23-TS212	HD23-TS213
TS213-TS212	HD33-TS21	HD33-HD23	HD45-HD23



WORKS FOR YOU.™

CONFIGURE, OPERATE AND MONITOR THE NEW SK 452-20

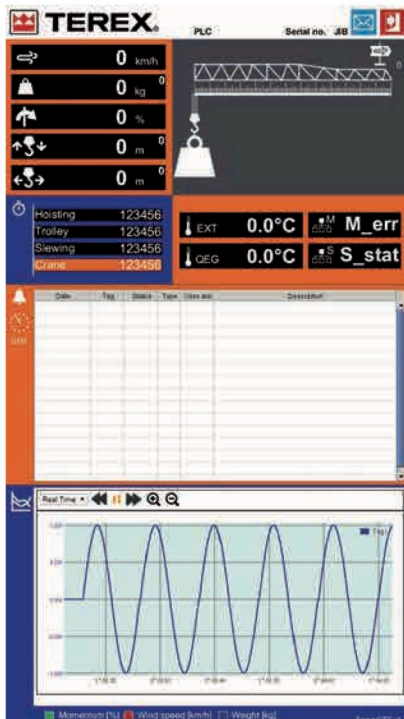
Easy to use interface and control system helps the operator to simply set crane's configuration, customize the speed of movements and focus on the job. Whether working in the cabin or connected remotely you always have real time crane data to allow you the right management of your machine.



CABIN

Comfortably set crane configuration and operate the crane.

- 7" full color, anti-glare, multi-language display
- Operator's profiles for customized speeds
- Limit switches setting
- Alarm history
- Ergonomic joysticks
- Trouble shooting



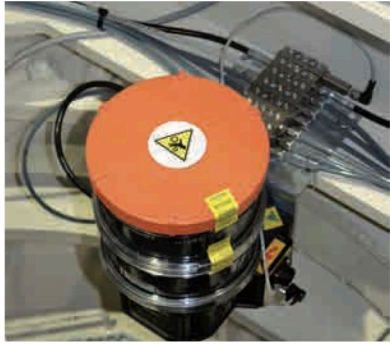
REMOTE ACCESS

Be informed and check all relevant crane data remotely. Monitoring will help understand job site development and crane performance to optimize efficiency and results.

- Actual crane data
- Historical crane data
- Weather conditions
- Working hours
- Active alarms
- Alarm history with email notification

DETAILS THAT MAKE THE DIFFERENCE

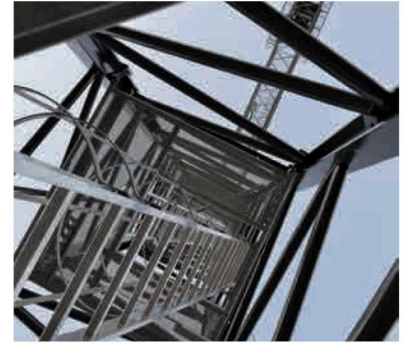
SK 452-20



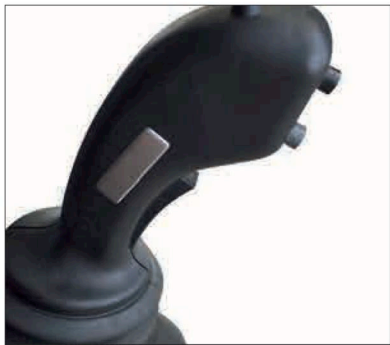
Automatic greasing of the slewing ring for ease of crane care and reduced downtime



Easy and time saving set-up, directly from the cabin, for all crane configuration limit settings



Tower masts with pre-assembled aluminium ladders and platforms. Max. durability for an increased return of investment. Quick and simple set up



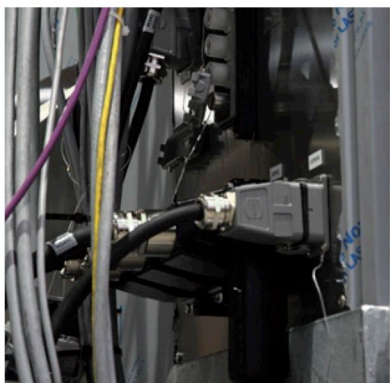
Ergonomic joystick with customized functions and possibility to control optional camera connections



Emergency push button within operator reach when monitoring and maintaining the crane



Indicator lights to inform of wind speed and load moment



Time saving cable connections



New counter-jib design with quick engagement for easy maintenance and transportation



New cabin platform design with wide access to the counter-jib and resistor for better cable management

A COMPLETE PRODUCT OFFERING: FROM THE CITY CLASS RANGE TO THE BIGGEST LUFFING JIB CRANES

FLAP TOP

Flat top tower cranes don't have the tower head and tie bars of conventional cranes, so they can be easily used in conjunction with other tower cranes at sites where space is confined, and can also lower investment costs by utilizing fewer tower segments. Terex flat top models are available from 1.7 USt to 44 USt max capacity with jib lengths up to 276 ft. Your best choice from the city class range to the biggest flat top cranes.

Crane model	Max. load (USt)	jib length (ft)									
		79	148	164	180	197	214	230	246	262	276
CITY CLASS FC 6.24H	1.7	0.6									
CTT 91-5	5.5			1.5							
CTT 132-6	6.6				1.6						
CTT 162-8	8.8						1.6				
CTT 182-8	8.8						2.2				
CTT 191-10	11.0						2.2				
CTT 231-12	13.2							2.3			
CTT 332-16	17.6								3.3		
CTT 361-18	19.8								3.7		
CTT 361-20	22.0								3.7		
CTT 561/A-20	22.0										2.4
CTT 561/A-32	35.2										1.6
CTT 721-40	44.0										3.7

LUFFING JIB

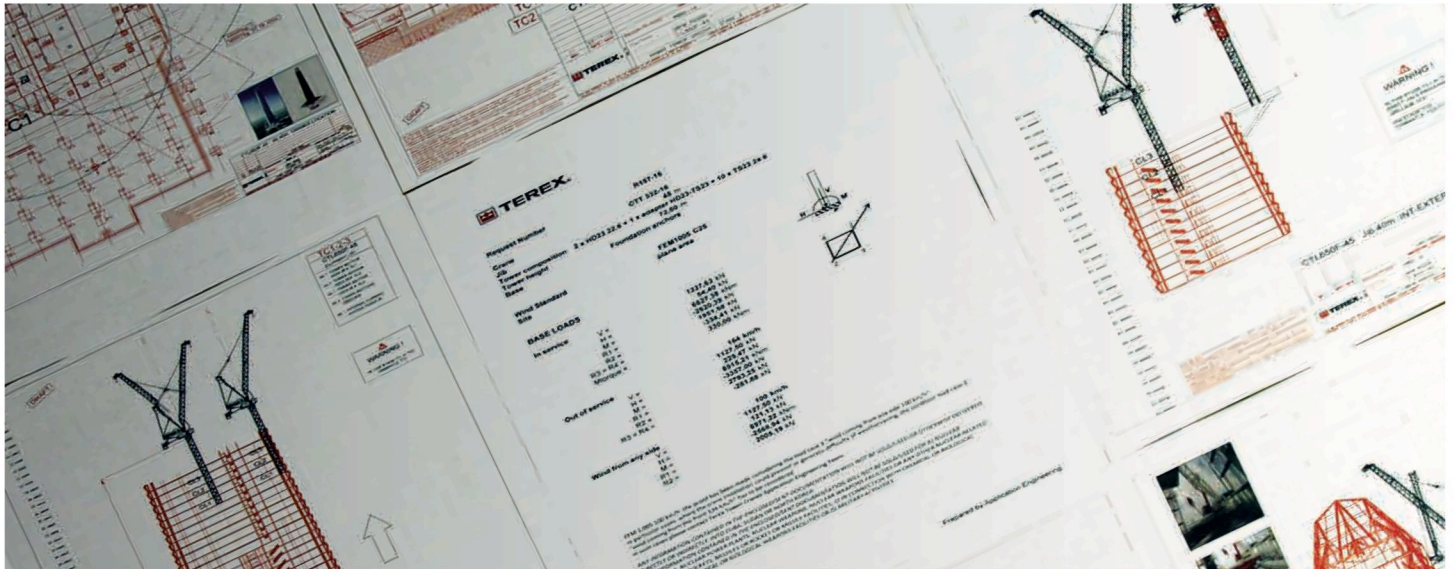
Luffing jib tower cranes are specially designed for urban areas. They feature outstanding reach without requiring too much room for slewing motions - a special advantage if many cranes are working at the same time on highrise buildings. These cranes are also common on power plant sites and ports. Terex luffers range from 11 USt to 72.7 USt.

Crane model	Max. capacity (USt)	jib length (ft)								
		98			164	180	197	213	230	246
CTL 140-10	11.0				1.9					
CTL 180-16	17.6				1.9					
CTL 260-18	19.8					3.4				
CTL 340-24	26.4					4.4				
CTL 430-24	26.4						6.0			
CTL 630B-32	35.2							7.3		
CTL 650F-45	49.6							7.7		
CTL 1600-66	72.7									17.6
CDK 100-16	17.6	3.5								

SUPPORTING YOUR JOBSITE FROM DAY ONE

Buying a crane is an important decision. The crane must match customer and jobsite requirements and offer a high return on investment. We are here to support you from the first steps of your buying decision on through the life of the crane. Our application engineering department is always available to answer your technical questions. Our team of professionals can also help you find the best solutions for:

- Feasibility studies for special applications
- Job site layout
- Tower crane installations and structural FEA
- Internal/external climbing solutions
- Additional services/solutions tailored to meet your needs



FINANCIAL SERVICES DESIGNED WITH YOU IN MIND

Terex Financial Services™
Your daily business is lifting. Ours is to support you with the financial flexibility and security that the ever-dynamic crane business requires.



WORKS FOR YOU.™