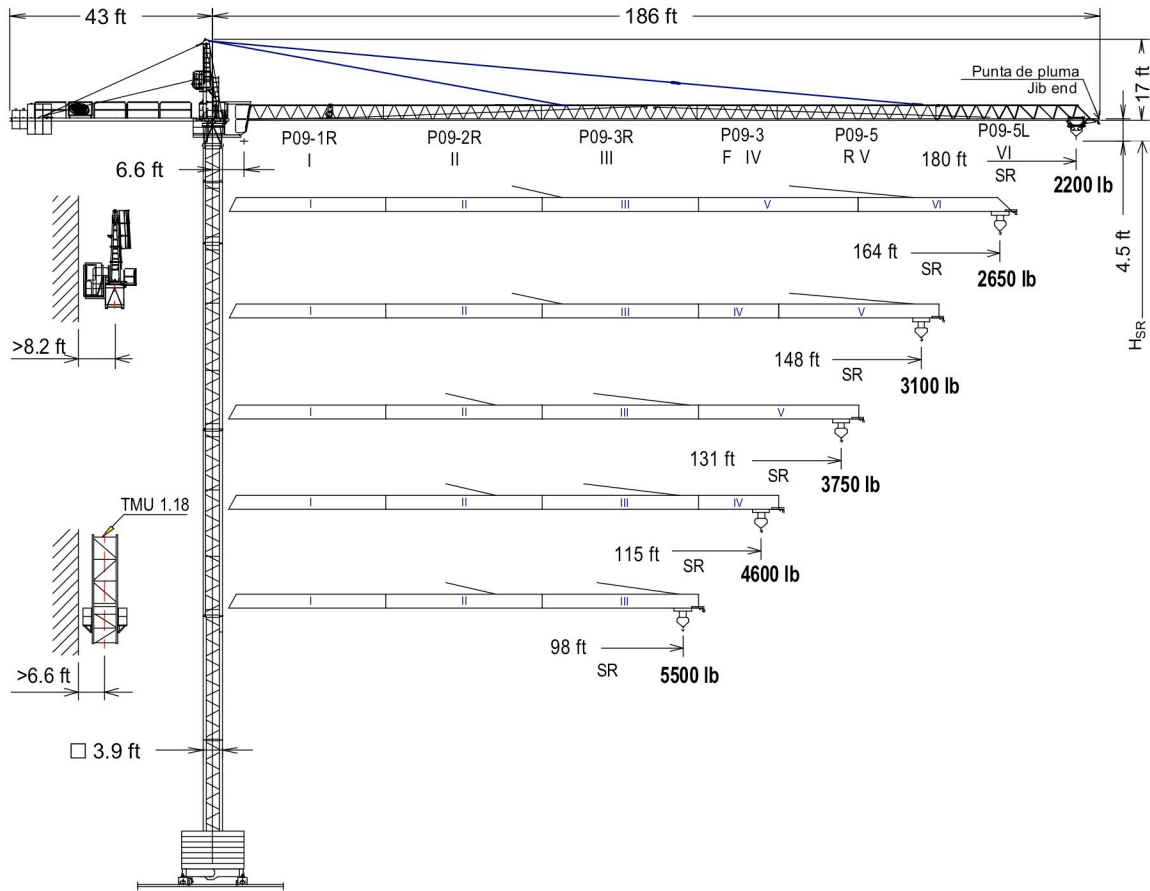




EN 14439
C25

UNE-EN-ISO 9001



H_{sr} = Altura máxima bajo gancho sin arriostrar (m).
Maximum height under hook without fastening (m).



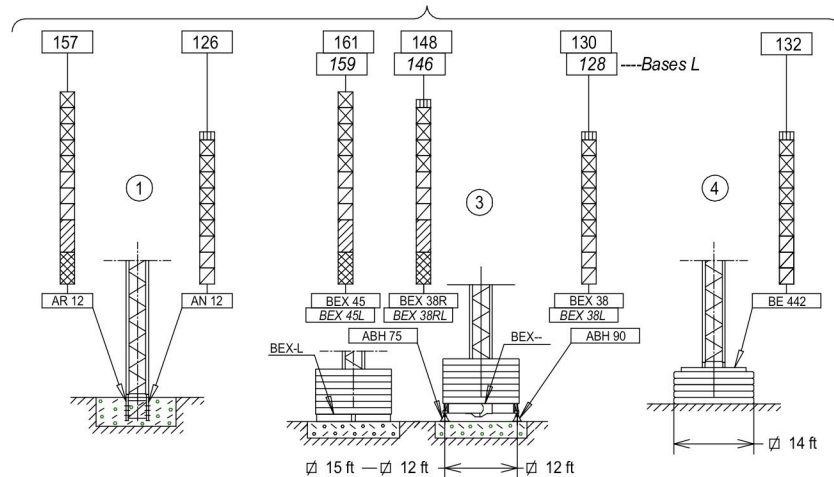
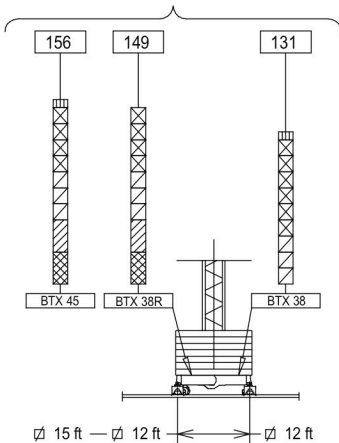
$H_{sr} - 6.6$ ft.

* Punta de pluma / Jib end

TMU 1.18	202.35.500	TN 4	146.32.000
P09-1R	162.40.000	TN2	146.32.500
P09-2R	162.41.000	BTX 45/BEX 45	137.20.500
P09-3R	162.42.000	BTX 38R/BEX 38R	137.20.000
P09-3F	157.43.000	BTX 38/BEX 38	149.20.000
P09-5R	162.44.000	BEX 45L	155.23.500
P09-5L	155.44.500	BEX 38RL	155.23.800
Punta de pluma/Jib end*	155.45.000	BEX 38L	155.23.000
TR 12	146.30.000	ABH 75	152.23.000
TN 12	146.31.000	ABH 90	146.23.000
TR 8RM	202.30.000	AR 12	137.21.000
TR 8M	146.30.800	AN 12	146.21.000
TR 4	800.32.300	BE 442	146.24.850

(H) TRASLACIÓN / TRAVELLING

(H) ESTACIONARIA / STATIONARY





Fecha / Date: 04/06/2020



FEM 1005 - C25

Reservado el derecho a modificaciones sin previo aviso. Declinamos toda responsabilidad derivada de la información proporcionada / Subject to modification, without previous warning. This information is supplied without liability






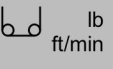
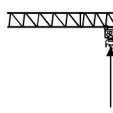


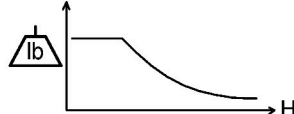
CARGAS / LOADS
J5510

 SR1 (lb)		Cargas máximas / Maximum loads						
		SR1 - 4400 lb						
 [ft]	4400 lb @...[ft]	Alcance del gancho [ft] / Hook reach [ft]						
		82	98	115	131	148	164	180
180	101	4400	4400	3800	3250	2830	2490	2200
164	106	4400	4400	4030	3450	3010	2650	-----
148	109	4400	4400	4140	3550	3090	-----	-----
131	114	4400	4400	4380	3750	-----	-----	-----
115	115	4400	4400	4400	-----	-----	-----	-----
98	98	4400	4400	-----	-----	-----	-----	-----

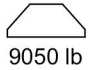

CARGAS / LOADS
J5510

 SR2 (lb)		Cargas máximas / Maximum loads						
		SR2 - 5500 lb						
 [ft]	5500 lb @...[ft]	Alcance del gancho [ft] / Hook reach [ft]						
		82	98	115	131	148	164	180
180	83	5500	4530	3800	3250	2830	2490	2200
164	87	5500	4800	4030	3460	3010	2650	-----
148	89	5500	4930	4140	3550	3090	-----	-----
131	93	5500	5190	4365	3750	-----	-----	-----
115	98	5500	5500	4630	-----	-----	-----	-----
98	98	5500	5500	-----	-----	-----	-----	-----

CARACTERISTICAS DE MECANISMOS / MECHANISMS FEATURES
J5510

*opcional *optional								
	EC1846 SR2 13,2 kW	EC1856 SR1 13,2 kW	*EC2566VF SR2 18,4 kW	*EC2580VF SR1 18,4 kW	9 / 12 / 15 ft TG825VF 2x3 kW	OG1108VF 2x4 kW	TC360 / *TC360VF 1,9 / *1,8 kW	TH1010 9,2 kW
 lb ft/min	2870 5510 5510	2425 4410 4410	2870 5510	2425 4410	0..82 ft/min	0... 0,8 r/min sl/min	98/196 ft/min *0...98 *98...196 ft/min	3.3 ft/min
 H	H ≤ SR 633 ft			SR 620 ft	 480V 60Hz	EC1846 EC1856	AMPERAGE = 48 A	
						EC2566 VF EC2580 VF	AMPERAGE = 56 A	

LASTRES INFERIORES / LOWER BALLASTS
J5510

		H (ft)	59	72	98	131	156	161
BEX 45 / BTX 45		 9050 lb	6		8	10	14	16
BEX45L			8			10	14	16
BEX 38R / BTX 38R			6	8	10	12	16	----
BEX 38 / BTX 38			6	8	10	12	-----	-----
BEX 38RL			8		10	12	16	----
BEX 38L			8		10	12	-----	-----
		H (ft)	105			132		
BE 442		 7600 lb	16			20		

H: Altura bajo gancho / Height under hook

Para alturas intermedias tomar el lastre correspondiente a la altura superior / For intermediate heights take the ballast corresponding to the higher height



Fecha / Date: 04/06/2020

Reservado el derecho a modificaciones sin previo aviso. Declinamos toda responsabilidad derivada de la información proporcionada / Subject to modification, without previous warning. This information is supplied without liability

DENOMINACIÓN / DENOMINATION		L [ft]	A [ft]	H [ft]	P / W [lb]	
Torre Tower	TR 8RM – TR 8M	26.5	3.9	3.9	5675-5545	
	TR 12 – TN 12	39.4	3.9	3.9	6260-6130	
	TR 4	13.0	3.8	3.8	2360	
	TN 4	13.4	3.9	3.9	2325	
	TN 2	7.5	3.9	3.9	1730	
Conjunto asiento pista, punta de torre, orientación y elevación <i>Slewing table assembly, tower head, slewing and hoisting mechanism</i>			22.9	5.9	7.1	9215
Tramo de pluma <i>Jib section</i>	P09 1R (I)	33.3	3.3	3.8	1730	
	P09 2R (II)	33.3	2.8	3.6	1360	
	P09 3R (III)	33.3	2.8	3.6	1330	
	P09 3F (IV)	17.2	2.8	3.4	550	
	P09 5R (V)	33.3	2.8	3.6	985	
	P09 5L (VI)	33.3	2.8	3.6	900	
Polipasto <i>Hook assembly</i>	SR		2.5	0.6	3.1	310
Carro <i>Trolley</i>	SR		3.3	4.6	2.5	275
Contrapluma con plataformas <i>Counterjib with platforms</i>			11.95	2.26	0.49	3110
Plataforma y cabina <i>Platform and cabin</i>			12.1	5.3	7.4	1885
Contrapeso <i>Counterweight</i>	Grande / Big		3.9	1.6	6.6	5205
	Pequeño / Small		3.9	1.6	4.3	3305
Base grúa Testero largo <i>Crane base Long carriage</i>	BTX 38	20.0	2.1	5.0	3475	
	BTX 38R	20.0	2.1	5.2	3950	
	BTX 45	23.0	2.1	5.2	4550	
	BTX 38L	17.9	1.8	3.2	2555	
	BTX 38RL	17.9	1.8	2.9	1875	
	BTX 45L	13.2	1.8	2.9	1455	
Base grúa Testero corto <i>Crane base Short carriage</i>	BEX 38	18.2	1.0	4.2	3065	
	BEX 38R	18.2	1.0	4.6	3505	
	BEX 45	21.5	1.0	4.6	4105	
Mecanismo traslación grúa <i>Crane travelling mechanism</i>			3.1	1.8	2.2	645
Lastre <i>Ballast</i>	Ø 12 ft - Ø15 ft		13.1	1.1	4.3	9040
	BE 442		6.9	1.1	6.9	7605
	BE 434		11.2	1.1	5.5	9480
Torre de montaje <i>Jacking cage</i>		TMU 1.18	23.4	5.8	5.6	7055
Torre de montaje sin puerta, carro, plataforma carro y viga de apoyo <i>Jacking cage without door, trolley, trolley platform and beam assembly</i>			23.4	5.8	5.6	5400

T	H											H	T		
1	15	TN 4										TN 4	146.32.000	15	1
2	28	TN 4										TN 4		28	2
3	67	TN 12										TN 12	146.31.000	67	3
4	106	TR 12										TR 12	146.30.000	106	4
5	132	TR 8M										TR 8M	146.30.800	132	5
6	144	TX-90/TXXR										TX-90/TXXR	202.36.500		
7	154	T 3-90										T 3-90	133.32.000	144	6
8	163													154	7
9	173													163	8
		AN 90													
		AN 90	133.21.000												
		AND 90	133.21.800												
		AN 150	161.21.000												
		AND 150	161.21.050												
		AL 20	153.21.800												
		ALD 20	160.21.250												
		AS 20	160.21.010												
		ASD 20/24	160.21.080												
		ASR 20	160.21.200												
		ASRD 20/24	156.21.000												

T	H											H	T		
1	9	TN 2										TN 2		9	1
2	28	TN 4										TN 4		22	2
3	61	TN 12										TN 12		61	3
4	100	TR 12										TR 12		100	4
5	126	TR 8M										TR 8M		126	5
6	138	TX-90/TXXR										TX-90/TXXR		138	6
7	148	T 3-90										T 3-90		148	7
8	157													157	8
9	177	T6-150A										T6-150A	161.31.300	173	8
10	196	T6-150										T6-150	161.31.000	192	9
11	208	TL20/TX150										TL20/TX150	161.36.000	205	10
12	227	TL20-5,6										TL20-5,6		217	11
		AL20													
		AS 20													

T	H											H	T		
1	15	TN 4										TN 4	146.32.000	15	1
2	28	TN 4										TN 4		28	2
3	67	TN 12										TN 12	146.31.000	67	3
4	106	TR 12										TR 12	146.30.000	106	4
5	132	TR 8M										TR 8M	146.30.800	132	5
6	144	TX-90/TXXR										TX-90/TXXR	202.36.500		
7	154	T 3-90										T 3-90	133.32.000	144	6
8	163													154	7
9	173													163	8
		AN 90													
		AN 90	133.21.000												
		AND 90	133.21.800												
		AN 150	161.21.000												
		AND 150	161.21.050												
		AL 20	153.21.800												
		ALD 20	160.21.250												
		AS 20	160.21.010												
		ASD 20/24	160.21.080												
		ASR 20	160.21.200												
		ASRD 20/24	156.21.000												

T	H											H	T		
1	9	TN 2										TN 2		9	1
2	28	TN 4										TN 4		22	2
3	61	TN 12										TN 12		61	3
4	100	TR 12										TR 12		100	4
5	126	TR 8M										TR 8M		126	5
6	138	TX-90/TXXR										TX-90/TXXR		138	6
7	148	T 3-90										T 3-90		148	7
8	157													157	8
9	177	T6-150A										T6-150A	161.31.300	173	8
10	196	T6-150										T6-150	161.31.000	192	9
11	208	TL20/TX150										TL20/TX150	161.36.000	205	10
12	227	TL20-5,6										TL20-5,6		217	11
		AL20													
		AS 20													

T	H											H	T		
1	15	TN 4										TN 4	146.32.000	15	1
2	28	TN 4										TN 4		28	2
3	67	TN 12										TN 12	146.31.000	67	3
4	106	TR 12										TR 12	146.30.000	106	4
5	132	TR 8M										TR 8M	146.30.800	132	5
6	144	TX-90/TXXR										TX-90/TXXR	202.36.500		
7	154	T 3-90										T 3-90	133.32.000	144	6
8	163													154	7
9	173													163	8
		AN 90													
		AN 90	133.21.000												
		AND 90	133.21.800												
		AN 150	161.21.000												
		AND 150	161.21.050												
		AL 20	153.21.800												
		ALD 20	160.21.250												
		AS 20	160.21.010												
		ASD 20/24	160.21.080												
		ASR 20	160.21.200												
		ASRD 20/24	156.21.000												

AN 90 133.21.000
 AND 90 133.21.800
 AN 150 161.21.000
 AND 150 161.21.050
 AL 20 153.21.800
 ALD 20 160.21.250
 AS 20 160.21.010
 ASD 20/24 160.21.080
 ASR 20 160.21.200
 ASRD 20/24 156.21.000

T: Torre / Tower
 H: Altura / Height

H = 126 + AN12

H - 6.5 ft.

Transporte / Transport

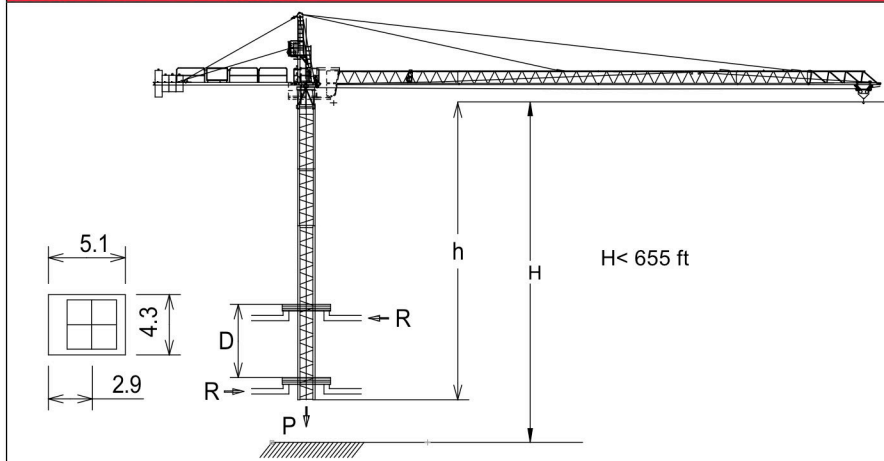
H = 126 + AN12

3x

3x **HIGH CUBE 40'**

$\leq 6 \times TN4$

TREPADO / CLIMBING J5510



$h_{max} = 3 \times TR4 + 6 \times TN4$

	▶	■
h (ft)	118	
D (ft)	28.2 - 32.8	
P (lbf)	82955	77335
Rmax (lbf)	22030	56650

TR4: 800.32.300

i Trepado interno / Internal climbing

- Viento fuera de servicio / Out of service wind
- i** Consultar / Consult
- ▶ En servicio / In service
- Fuera de servicio / Out of service



LOC & MAT

GSM : +33(0)6 11 16 84 14

E-mail : contact@locetmat.com
 Web Site : www.locetmat.com

Tel : +33(0)4 68 92 50 92

