



**TRT 80US**  
80 US capacity class  
Rough terrain crane  
Datasheet  
imperial



# TRT 80US

**WORKS FOR YOU.™**

# CONTENTS

TRT 80US

## INDICE

	Page · Página:
<b>Key</b> · Lejenda .....	3
<b>Highlights</b> · Características destacadas .....	4
<b>Weights</b> · Pesos .....	5
<b>Dimensions</b> · Dimensiones .....	6-7
<b>Steering Radii</b> · Radios de dirección .....	8-9
<b>Range Graph</b> · Diagrama de carga .....	10, 15
<b>Load Chart</b> · Tabla de carga .....	11-14
<b>Technical Specifications</b> · Especificación técnica	
<b>Boom</b> · Pluma .....	16
<b>Hoist</b> · Cabrestante .....	16
<b>Upper Structure</b> · Superestructura .....	16
<b>Cab and Controls</b> · Cabina y controles .....	17
<b>Carrier</b> · Chasis .....	17-18
<b>Vehicle Performance</b> · Prestaciones del vehículo .....	18
<b>Tires</b> · Neumáticos .....	18
<b>Options</b> · Opciones .....	18-19
<b>Notes to lifting capacity</b> · Notas sobre la capacidad de elevación .....	21

## LEJENDA

	<b>Counterweight</b> · Contrapeso		<b>Boom extension</b> · Extensión
	<b>Main boom</b> · Pluma principal		<b>Performance</b> · Prestaciones
	<b>Boom length</b> · Longitud pluma		<b>Boom elevation angle</b> · Ángulo elevación pluma
	<b>Tip height</b> · Altura de la punta		<b>Working radius</b> · Radio de trabajo
	<b>Angular offsets</b> · Inclinación		<b>Minimum distance between hook block and boom head</b> · Distancia mínima gancho a cabeza pluma
	<b>Aux head</b> · Cabeza auxiliar		<b>Slewing locked</b> · Giro bloqueado
	<b>Slewing / Allowable range</b> · Giro / Rango admisible		<b>Slewing gears</b> · Sistema de giro
	<b>Outriggers / Lifting on outriggers</b> · Estabilizadores / Elevación sobre estabilizadores		<b>Lifting on wheels / Pick &amp; Carry</b> · Elevación sobre ruedas / pick & carry
	<b>Main hoist</b> · Cabrestante principal		<b>Auxiliary hoist</b> · Cabrestante auxiliar
	<b>Hoist speed</b> · Velocidad cabrestante		<b>Rope length</b> · Longitud cable
	<b>Rope</b> · Cable		<b>Line pull</b> · Tracción cable
	<b>Rope diameter</b> · Diámetro cable		<b>Tires</b> · Neumáticos
	<b>Hook block</b> · Gancho		<b>Engine</b> · Motor
	<b>Cab</b> · Cabina		<b>Steering</b> · Dirección
	<b>Controls</b> · Controles		<b>Speed</b> · Velocidad
	<b>Mechanical transmission</b> · Transmisión mecánica		<b>Heating / Air conditioning</b> · Calefacción / Climatización
	<b>Hydraulics</b> · Sistema hidráulico		<b>Gradeability</b> · Pendiente máx.
	<b>Operation temperature</b> · Temperatura de servicio		<b>Gross vehicle weight</b> · Peso bruto vehículo
	<b>Lights</b> · Luces		<b>Weight on front axle</b> · Peso eje delantero
	<b>Crane / Crane in standard configuration</b> · Grúa / Grúa configuración estándar		<b>Weight on rear axle</b> · Peso eje trasero
	<b>Crane without counterweight</b> · Grúa sin contrapeso		<b>No. of sheaves</b> · N° poleas
	<b>Rated weight on hook block</b> · Carga nominal en gancho		<b>Rams-horn hook</b> · Aparejo gancho doble
	<b>No. of lines</b> · N° ramales		<b>Differential lock</b> · Bloqueo diferencial
	<b>Single hook</b> · Gancho simple		
	<b>Electric circuit</b> · Circuito eléctrico		

# HIGHLIGHTS

## CARACTERÍSTICAS DESTACADAS

**TRT 80US**

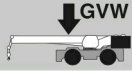
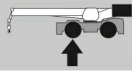

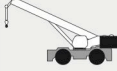






- ▶ Rated capacity · Capacidad nominal:  
80 USt at 10 ft working radius  
80 USt a 10 ft radio de trabajo
- ▶ Maximum main boom length · Longitud de pluma máx.:  
138 ft
- ▶ Maximum tip height · Altura de la punta máx.:  
148 ft
- ▶ Maximum hook height · Altura de gancho máx.:  
141 ft

# WEIGHTS

PESOS

**TRT 80US**

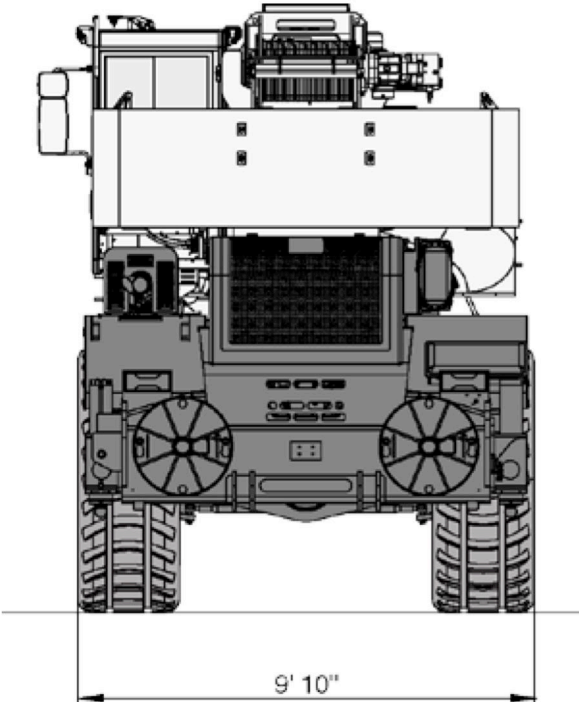
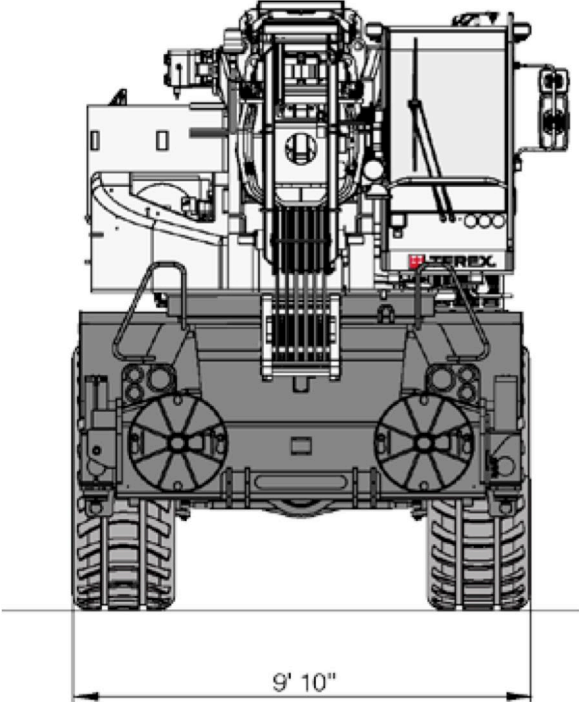
				
	without hook block · sin gancho	106,200 lbs	53,040 lbs	53,150 lbs
<b>Add / Subtract for main optional equipment · Sumar / restar para equipamiento opcional principal</b>				
	**	+ 1,830 lbs	- 340 lbs	+ 2,170 lbs
	80 USt*	+ 1,650 lbs	+ 4,080 lbs	- 2,425 lbs
	22 USt*	+ 550 lbs	+ 1,390 lbs	- 840 lbs
	11 USt*	+ 575 lbs	+ 880 lbs	- 530 lbs
NOTE: Values are subject to 2% variation · NOTA: Valores sujetos a una variación del 2%				
* Weight distribution calculated considering the hook block linked to the front shield of the machine · Distribución de pesos calculada considerando el gancho asegurado al protector frontal				
** Weight includes rope · El peso incluye soporte cabrestante				



# DIMENSIONS

DIMENSIONES

**TRT 80US**

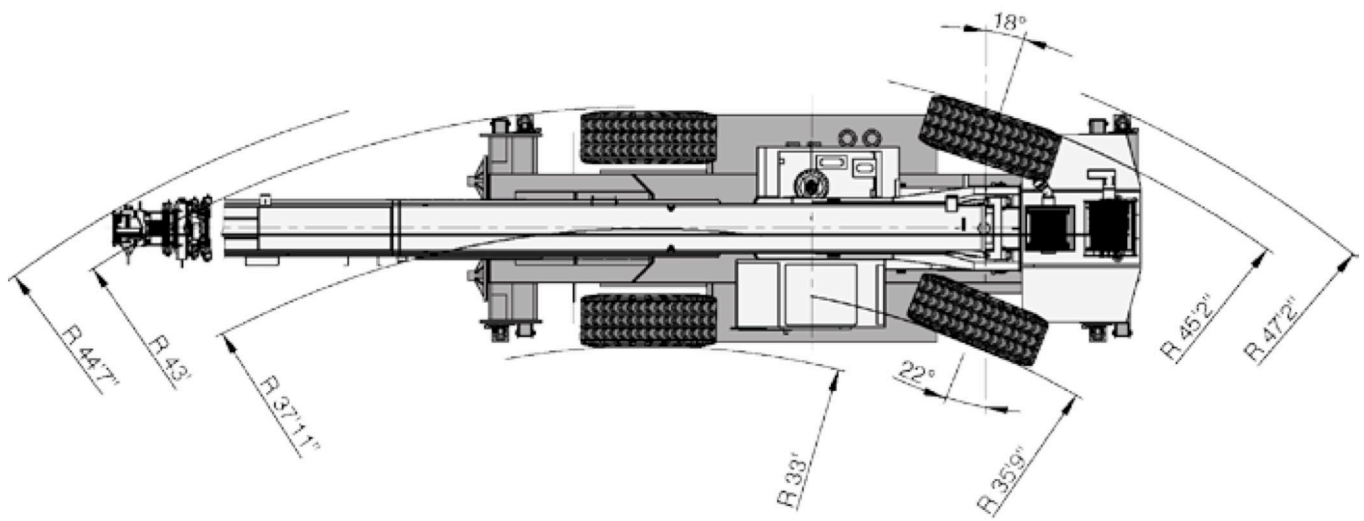
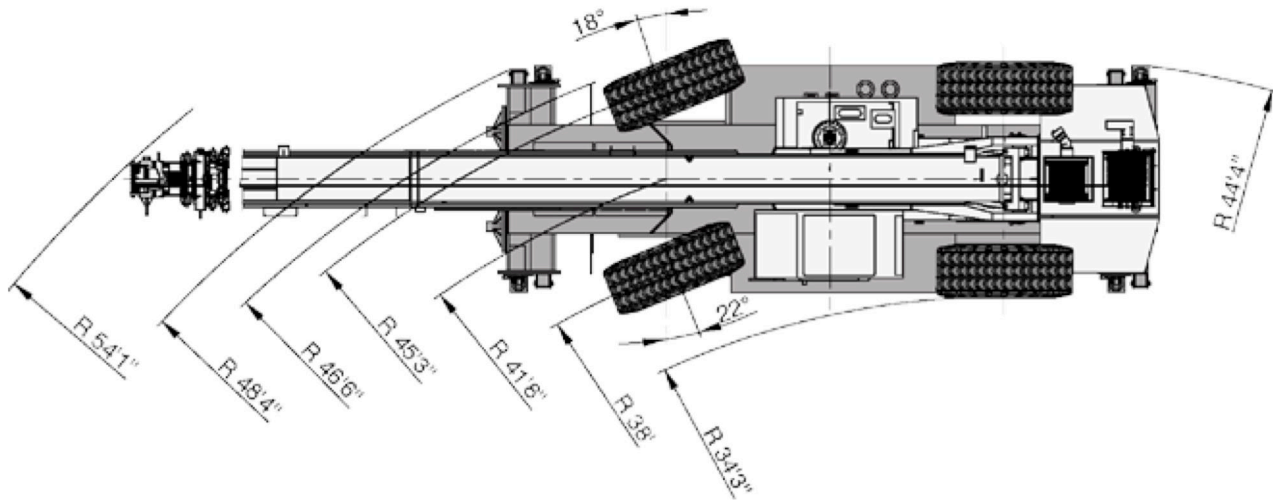


# STEERING RADII

RADIOS DE DIRECCIÓN

TRT 80US

Two wheel steer · Dirección en dos ruedas



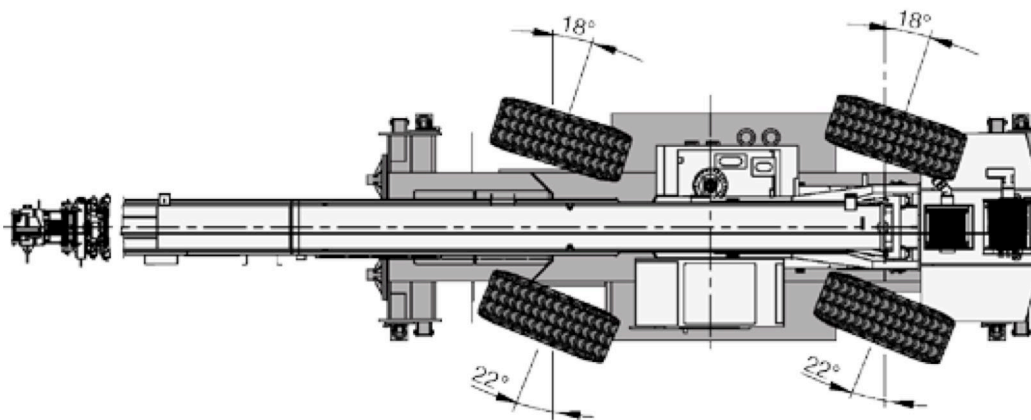
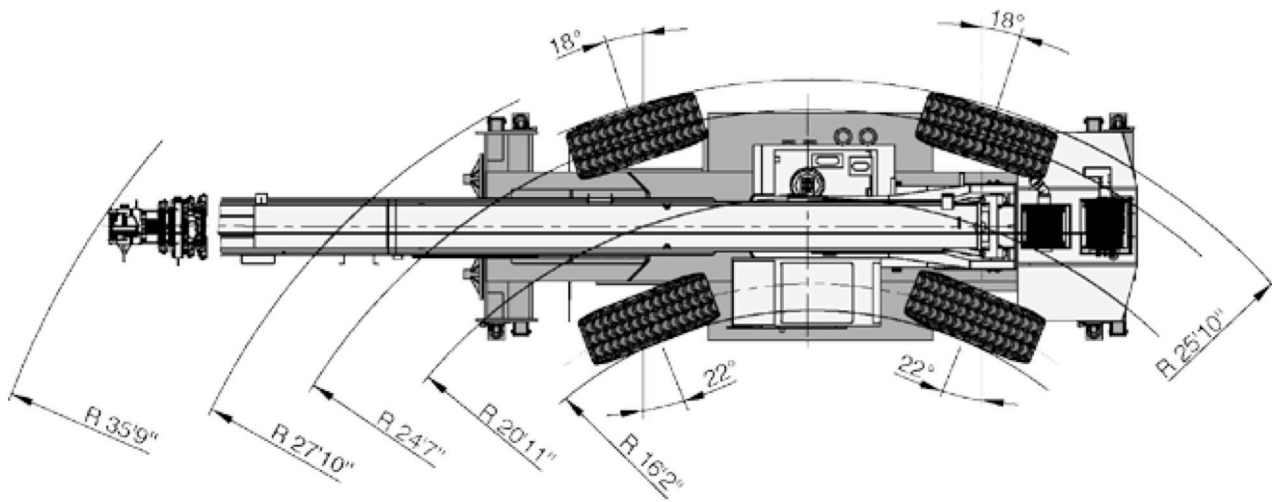


# STEERING RADII

RADIOS DE DIRECCIÓN

TRT 80US

Four wheel steer · Dirección en cuatro ruedas

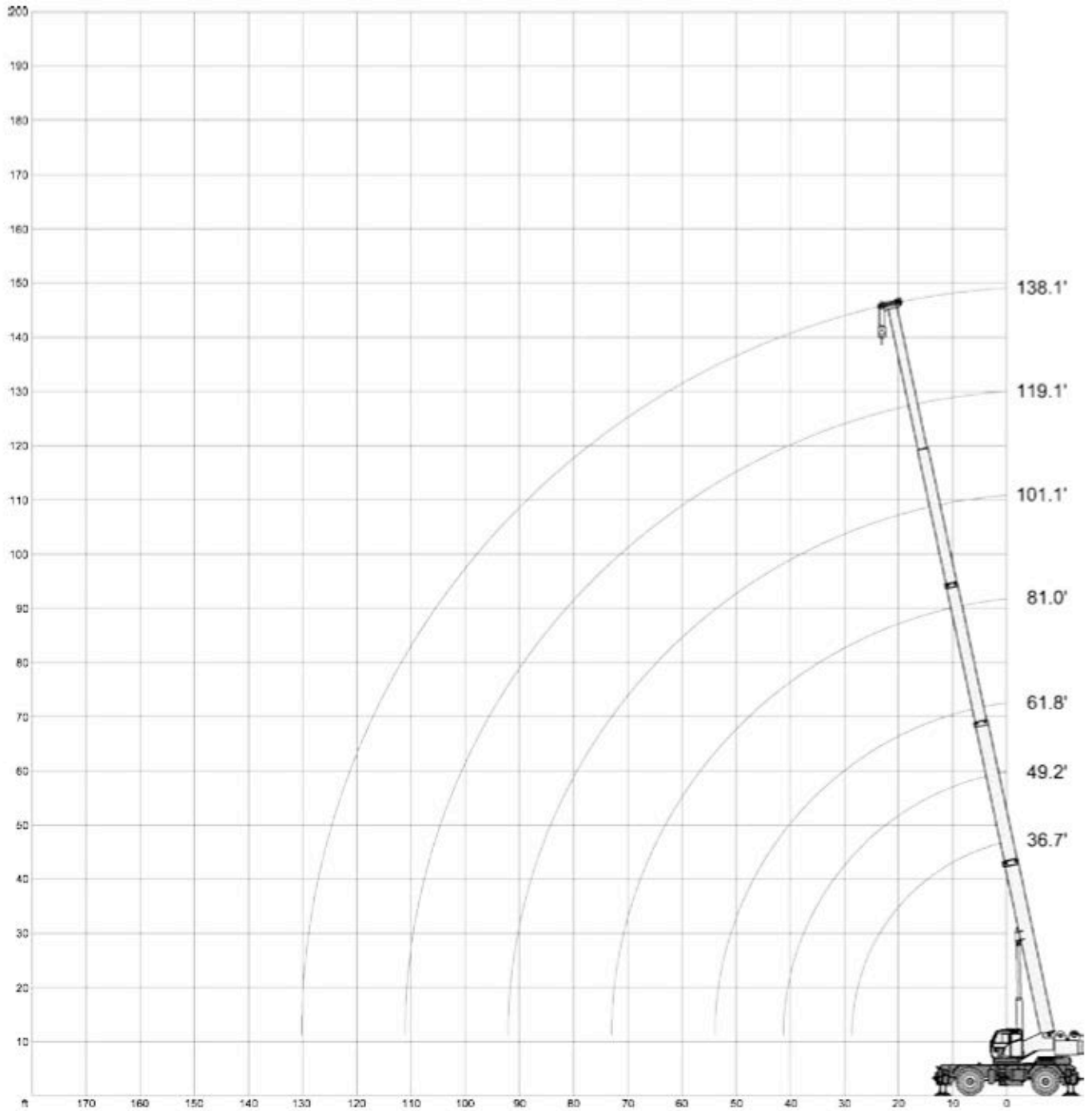
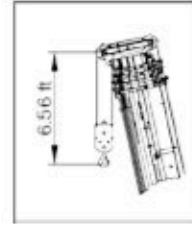


# RANGE GRAPH

DIAGRAMA DE CARGA

**TRT 80US**

**Mode 2**



# LOAD CHART

**TRT 80US**

TABLA DE CARGA

**Outriggers Fully Extended (100 %) - Estabilizadores totalmente extendidos (100 %)**  
**Mode 3**



19,620 lbs
 24.9 ft x 26.3 ft
 360°
STANDARD ASME B30.5

	36.7 ft	46.9 ft	56.8 ft	66.9 ft	77.1 ft	87.3 ft	97.4 ft	107.6 ft	117.8 ft	128.0 ft	138.1 ft		
ft	lbs	lbs	lbs	lbs	lbs	lbs	lbs	lbs	lbs	lbs	lbs	ft	
8.2	176,320	60,610	57,520	-	-	-	-	-	-	-	-	8.2	
9.8	165,300	62,810	58,630	55,540	-	-	-	-	-	-	-	9.8	
11.5	153,620	65,240	60,390	56,860	-	-	-	-	-	-	-	11.5	
13.1	140,170	67,880	62,150	58,410	54,880	-	-	-	-	-	-	13.1	
14.8	132,460	71,190	64,360	59,950	55,320	53,120	-	-	-	-	-	14.8	
16.4	121,000	74,720	66,560	62,150	56,640	54,220	50,470	-	-	-	-	16.4	
19.7	97,640	87,280	74,050	57,520	56,200	51,130	47,390	-	-	-	-	19.7	
23.0	81,770	80,230	78,460	52,680	50,690	45,840	42,540	39,890	37,910	-	-	23.0	
26.2	65,900	66,780	69,870	48,270	46,060	41,660	38,350	35,930	34,160	32,400	22,480	26.2	
29.5	-	57,520	59,290	44,740	42,100	37,910	35,040	32,840	30,860	29,530	22,040	29.5	
32.8	-	50,030	51,570	41,660	38,790	34,820	32,180	29,970	28,210	26,890	21,600	32.8	
36.1	-	42,760	43,420	39,010	35,930	32,180	29,530	27,550	26,010	24,680	20,060	36.1	
39.4	-	-	36,810	36,590	33,500	29,970	27,330	25,570	24,020	22,700	18,510	39.4	
42.7	-	-	31,740	31,960	31,300	27,990	25,570	23,580	22,260	20,940	17,190	42.7	
45.9	-	-	27,770	27,990	29,310	26,010	23,800	22,040	20,500	19,400	15,870	45.9	
49.2	-	-	-	24,910	27,550	24,460	22,260	20,500	19,170	18,070	14,770	49.2	
52.5	-	-	-	21,820	24,680	22,920	20,720	19,170	17,850	16,970	13,890	52.5	
55.8	-	-	-	19,620	22,040	21,600	19,620	18,070	16,750	15,650	13,000	55.8	
59.1	-	-	-	17,410	19,620	19,840	18,510	16,970	15,430	14,550	12,340	59.1	
62.3	-	-	-	-	17,630	17,850	17,410	15,650	14,550	13,660	11,460	62.3	
65.6	-	-	-	-	15,870	15,870	16,090	14,770	13,660	12,780	11,020	65.6	
68.9	-	-	-	-	14,330	14,330	14,330	14,110	13,000	12,120	10,360	68.9	
72.2	-	-	-	-	13,000	13,000	13,000	13,220	11,680	11,460	9,920	72.2	
75.5	-	-	-	-	-	11,900	11,900	11,900	10,360	10,360	9,260	75.5	
78.7	-	-	-	-	-	10,580	10,800	10,800	9,480	9,480	8,600	78.7	
82.0	-	-	-	-	-	9,700	9,700	9,920	8,380	8,600	7,710	82.0	
85.3	-	-	-	-	-	-	8,820	9,040	7,710	7,710	7,270	85.3	
88.6	-	-	-	-	-	-	8,150	8,150	6,830	6,830	6,830	88.6	
91.9	-	-	-	-	-	-	7,270	7,490	6,170	6,170	5,730	91.9	
95.1	-	-	-	-	-	-	-	6,830	5,510	5,510	5,290	95.1	
98.4	-	-	-	-	-	-	-	6,170	4,850	5,070	4,630	98.4	
101.7	-	-	-	-	-	-	-	5,510	4,410	4,410	4,190	101.7	
105.0	-	-	-	-	-	-	-	-	3,970	3,970	3,750	105.0	
108.3	-	-	-	-	-	-	-	-	3,310	3,530	3,310	108.3	
111.5	-	-	-	-	-	-	-	-	2,870	3,090	3,090	111.5	
114.8	-	-	-	-	-	-	-	-	-	2,640	2,640	114.8	
118.1	-	-	-	-	-	-	-	-	-	2,200	2,420	118.1	
121.4	-	-	-	-	-	-	-	-	-	1,760	1,980	121.4	
124.7	-	-	-	-	-	-	-	-	-	-	1,760	124.7	
128.0	-	-	-	-	-	-	-	-	-	-	1,320	128.0	

# LOAD CHART

**TRT 80US**

TABLA DE CARGA

**Outriggers Half Extended (50 %) - Estabilizadores extendidos hasta la mitad (50 %)**  
**Mode 3**



19,620 lbs
 24.9 ft x 17.4 ft
 360°
STANDARD ASME B30.5

	36.7 ft	46.9 ft	56.8 ft	66.9 ft	77.1 ft	87.3 ft	97.4 ft	107.6 ft	117.8 ft	128.0 ft	138.1 ft		
ft	lbs	lbs	lbs	lbs	lbs	lbs	lbs	lbs	lbs	lbs	lbs	ft	
8.2	176,320	60,610	57,520	-	-	-	-	-	-	-	-	8.2	
9.8	165,300	62,810	58,630	55,540	-	-	-	-	-	-	-	9.8	
11.5	153,620	65,240	60,390	56,860	-	-	-	-	-	-	-	11.5	
13.1	140,170	67,880	62,150	58,410	55,320	-	-	-	-	-	-	13.1	
14.8	132,460	71,190	64,360	59,950	56,640	54,220	-	-	-	-	-	14.8	
16.4	96,090	74,720	66,560	62,150	56,200	51,130	47,390	-	-	-	-	16.4	
19.7	65,460	72,950	72,730	57,520	50,690	45,840	42,540	-	-	-	-	19.7	
23.0	48,710	54,440	54,660	52,680	46,060	41,660	38,350	35,930	34,160	-	-	23.0	
26.2	37,690	42,540	42,760	42,760	42,100	37,910	35,040	32,840	30,860	29,530	22,480	26.2	
29.5	-	34,380	34,600	34,820	34,820	34,820	32,180	29,970	28,210	26,890	22,040	29.5	
32.8	-	28,430	28,650	28,870	28,870	28,870	28,870	27,550	26,010	24,680	21,600	32.8	
36.1	-	23,580	24,020	24,240	24,460	24,460	24,460	24,460	24,020	22,700	20,060	36.1	
39.4	-	-	20,280	20,720	20,720	20,720	20,940	20,940	20,940	20,940	18,510	39.4	
42.7	-	-	17,410	17,630	17,850	18,070	18,070	18,070	18,070	18,070	17,190	42.7	
45.9	-	-	14,990	15,210	15,210	15,210	15,430	15,650	15,650	15,650	13,890	45.9	
49.2	-	-	-	13,440	13,440	13,220	13,440	13,660	13,660	13,660	12,120	49.2	
52.5	-	-	-	11,460	11,680	11,680	11,900	11,900	11,900	11,900	10,580	52.5	
55.8	-	-	-	9,920	10,140	10,360	10,360	10,360	10,360	10,360	9,480	55.8	
59.1	-	-	-	8,600	8,820	9,040	9,040	9,040	9,040	9,260	8,150	59.1	
62.3	-	-	-	-	7,710	7,930	7,930	7,930	8,150	8,150	7,270	62.3	
65.6	-	-	-	-	6,610	6,830	6,830	7,050	7,050	7,050	6,390	65.6	
68.9	-	-	-	-	5,730	5,950	5,950	6,170	6,170	6,170	5,510	68.9	
72.2	-	-	-	-	-	5,070	5,290	5,290	5,290	5,510	4,850	72.2	
75.5	-	-	-	-	-	4,410	4,410	4,630	4,630	4,630	4,190	75.5	
78.7	-	-	-	-	-	3,750	3,750	3,970	3,970	3,970	3,750	78.7	
82.0	-	-	-	-	-	-	3,310	3,310	3,310	3,530	3,090	82.0	
85.3	-	-	-	-	-	-	2,640	2,870	2,870	2,870	2,640	85.3	
88.6	-	-	-	-	-	-	2,200	2,200	2,420	2,420	2,200	88.6	
91.9	-	-	-	-	-	-	-	1,760	1,980	1,980	1,760	91.9	
95.1	-	-	-	-	-	-	-	1,320	1,540	1,540	1,320	95.1	
98.4	-	-	-	-	-	-	-	880	1,100	1,100	1,100	98.4	
101.7	-	-	-	-	-	-	-	-	660	660	660	101.7	
105.0	-	-	-	-	-	-	-	-	220	440	440	105.0	

# LOAD CHART

**TRT 80US**

TABLA DE CARGA

**Outriggers not Extended (0 %) - Estabilizadores non extendidos (0 %)**

**Mode 3**



19,620 lbs
 24.9 ft x 8.9 ft
 360°
**STANDARD ASME B30.5**

ft	ft												ft
	36.7 ft	46.9 ft	56.8 ft	66.9 ft	77.1 ft	87.3 ft	97.4 ft	107.6 ft	117.8 ft	128.0 ft	138.1 ft		
lbs	lbs	lbs	lbs	lbs	lbs	lbs	lbs	lbs	lbs	lbs	lbs	lbs	
8.2	100,940	62,810	58,630	-	-	-	-	-	-	-	-	-	8.2
9.8	87,060	62,810	58,630	56,860	-	-	-	-	-	-	-	-	9.8
11.5	66,120	65,240	60,390	56,860	-	-	-	-	-	-	-	-	11.5
13.1	52,680	58,410	58,190	58,410	55,320	-	-	-	-	-	-	-	13.1
14.8	42,980	48,050	48,050	48,050	47,610	47,390	-	-	-	-	-	-	14.8
16.4	35,930	40,550	40,550	40,550	40,330	40,110	39,890	-	-	-	-	-	16.4
19.7	26,450	29,970	30,190	30,190	30,190	30,190	29,970	-	-	-	-	-	19.7
23.0	20,060	22,920	23,140	23,360	23,580	23,580	23,360	23,360	23,140	-	-	-	23.0
26.2	15,430	18,070	18,290	18,510	18,510	18,730	18,730	18,730	18,510	18,510	16,530	-	26.2
29.5	-	13,890	14,330	14,550	14,770	14,770	14,770	14,770	14,770	14,770	13,440	-	29.5
32.8	-	11,240	11,680	11,900	12,120	12,120	12,120	12,340	12,340	12,340	11,020	-	32.8
36.1	-	9,040	9,480	9,700	9,920	9,920	10,140	10,140	10,140	10,140	9,260	-	36.1
39.4	-	-	7,710	7,930	8,150	8,150	8,380	8,380	8,380	8,380	7,710	-	39.4
42.7	-	-	6,170	6,390	6,610	6,610	6,830	6,830	6,830	6,830	6,170	-	42.7
45.9	-	-	4,850	5,070	5,290	5,510	5,510	5,510	5,730	5,730	5,070	-	45.9
49.2	-	-	-	3,970	4,190	4,410	4,410	4,410	4,630	4,630	4,190	-	49.2
52.5	-	-	-	3,090	3,310	3,310	3,530	3,530	3,530	3,530	3,310	-	52.5
55.8	-	-	-	2,200	2,420	2,640	2,640	2,640	2,870	2,870	2,640	-	55.8
59.1	-	-	-	1,320	1,760	1,760	1,980	1,980	1,980	1,980	1,980	-	59.1
62.3	-	-	-	-	1,100	1,100	1,320	1,320	1,320	1,540	1,320	-	62.3
65.6	-	-	-	-	440	660	660	880	880	880	880	-	65.6
68.9	-	-	-	-	-	-	220	220	220	440	440	-	68.9

# LOAD CHART

**TRT 80US**

TABLA DE CARGA

**On Tires - Sobre neumaticos**  
**Mode 3**



		19,620 lbs		0 mph		STANDARD ASME B30.5															
		36.7 ft		41.7 ft		46.9 ft		51.8 ft		56.8 ft		62.0 ft		66.9 ft		72.2 ft		77.1 ft			
		lbs		lbs		lbs		lbs		lbs		lbs		lbs		lbs		lbs		ft	
8.2	ft	32,400	34,600	24,910	18,950	14,330	14,330	-	-	-	-	-	-	-	-	-	-	-	-	-	8.2
9.8	ft	32,400	34,600	24,910	18,950	14,330	14,330	11,460	-	-	-	-	-	-	-	-	-	-	-	-	9.8
11.5	ft	32,400	34,600	24,910	18,950	14,330	14,330	11,460	9,260	-	-	-	-	-	-	-	-	-	-	-	11.5
13.1	ft	27,330	34,600	24,910	18,950	14,330	14,330	11,460	9,260	9,260	-	-	-	-	-	-	-	-	-	-	13.1
14.8	ft	23,580	29,530	24,910	18,950	14,330	14,330	11,460	9,260	9,260	-	-	-	-	-	-	-	-	-	-	14.8
16.4	ft	20,500	25,570	24,910	18,950	14,330	14,330	11,460	9,260	9,260	-	-	-	-	-	-	-	-	-	-	16.4
19.7	ft	15,870	19,620	19,170	18,950	14,330	14,330	11,460	9,260	9,260	-	-	-	-	-	-	-	-	-	-	19.7
23.0	ft	12,560	14,990	14,770	14,550	14,330	14,330	11,460	9,260	9,260	-	-	-	-	-	-	-	-	-	-	23.0
26.2	ft	10,140	11,900	11,900	11,680	11,680	11,680	11,460	9,260	9,260	-	-	-	-	-	-	-	-	-	-	26.2
29.5	ft	-	9,700	9,700	9,700	9,480	9,480	9,260	9,260	9,260	-	-	-	-	-	-	-	-	-	-	29.5
32.8	ft	-	7,930	7,930	7,710	7,710	7,710	7,710	7,490	7,490	-	-	-	-	-	-	-	-	-	-	32.8
36.1	ft	-	-	6,390	6,390	6,390	6,390	6,170	6,170	6,170	-	-	-	-	-	-	-	-	-	-	36.1
39.4	ft	-	-	-	5,070	5,070	5,070	5,070	5,070	5,070	-	-	-	-	-	-	-	-	-	-	39.4
42.7	ft	-	-	-	4,190	3,970	3,970	3,970	3,970	3,970	-	-	-	-	-	-	-	-	-	-	42.7
45.9	ft	-	-	-	-	3,090	3,090	3,090	3,090	3,090	-	-	-	-	-	-	-	-	-	-	45.9
49.2	ft	-	-	-	-	-	2,420	2,420	2,420	2,420	-	-	-	-	-	-	-	-	-	-	49.2
52.5	ft	-	-	-	-	-	1,760	1,760	1,760	1,760	-	-	-	-	-	-	-	-	-	-	52.5
55.8	ft	-	-	-	-	-	-	1,100	1,100	1,100	-	-	-	-	-	-	-	-	-	-	55.8
59.1	ft	-	-	-	-	-	-	660	660	660	-	-	-	-	-	-	-	-	-	-	59.1
62.3	ft	-	-	-	-	-	-	-	220	220	-	-	-	-	-	-	-	-	-	-	62.3

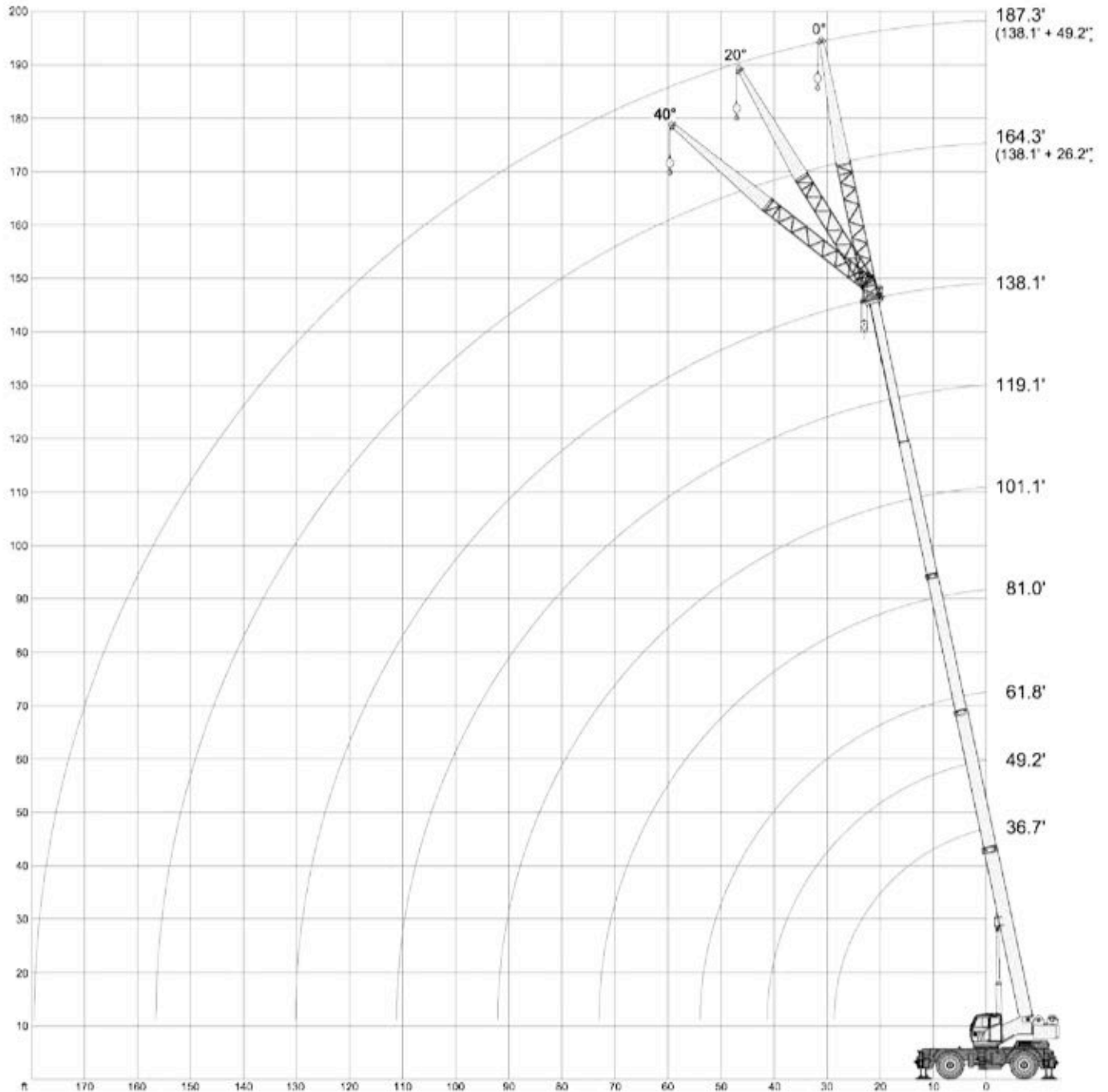
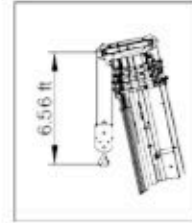
		19,620 lbs		1.24 mph		STANDARD ASME B30.5															
		36.7 ft		41.7 ft		46.9 ft		51.8 ft		56.8 ft		62.0 ft		66.9 ft		72.2 ft		77.1 ft			
		lbs		lbs		lbs		lbs		lbs		lbs		lbs		lbs		lbs		ft	
8.2	ft	45,620	45,840	46,060	46,280	46,500	46,500	-	-	-	-	-	-	-	-	-	-	-	-	-	8.2
9.8	ft	39,890	40,330	40,550	40,770	40,770	40,990	41,210	-	-	-	-	-	-	-	-	-	-	-	-	9.8
11.5	ft	35,480	35,700	35,930	36,150	36,370	36,370	36,590	36,590	-	-	-	-	-	-	-	-	-	-	-	11.5
13.1	ft	31,520	31,740	32,180	32,180	32,400	32,620	32,620	32,840	32,840	-	-	-	-	-	-	-	-	-	-	13.1
14.8	ft	28,210	28,430	28,870	29,090	29,090	29,310	29,310	29,530	29,530	-	-	-	-	-	-	-	-	-	-	14.8
16.4	ft	25,350	25,790	26,010	26,230	26,230	26,450	26,670	26,670	26,670	-	-	-	-	-	-	-	-	-	-	16.4
19.7	ft	20,720	21,160	21,380	21,600	21,600	21,820	22,040	22,040	22,040	-	-	-	-	-	-	-	-	-	-	19.7
23.0	ft	16,970	17,410	17,630	17,850	18,070	18,290	18,290	18,510	18,510	-	-	-	-	-	-	-	-	-	-	23.0
26.2	ft	14,110	14,550	14,770	14,990	15,210	15,210	15,430	15,430	15,650	-	-	-	-	-	-	-	-	-	-	26.2
29.5	ft	-	11,900	12,340	12,560	12,780	13,000	13,000	13,220	13,220	-	-	-	-	-	-	-	-	-	-	29.5
32.8	ft	-	9,920	10,360	10,580	10,800	10,800	11,020	11,240	11,240	-	-	-	-	-	-	-	-	-	-	32.8
36.1	ft	-	-	8,380	8,820	9,040	9,260	9,260	9,480	9,480	-	-	-	-	-	-	-	-	-	-	36.1
39.4	ft	-	-	-	7,270	7,490	7,710	7,710	7,930	7,930	-	-	-	-	-	-	-	-	-	-	39.4
42.7	ft	-	-	-	5,950	6,170	6,390	6,610	6,610	6,610	-	-	-	-	-	-	-	-	-	-	42.7
45.9	ft	-	-	-	-	5,070	5,290	5,290	5,510	5,510	-	-	-	-	-	-	-	-	-	-	45.9
49.2	ft	-	-	-	-	-	4,190	4,410	4,630	4,630	-	-	-	-	-	-	-	-	-	-	49.2
52.5	ft	-	-	-	-	-	3,310	3,530	3,750	3,750	-	-	-	-	-	-	-	-	-	-	52.5
55.8	ft	-	-	-	-	-	-	2,640	2,870	3,090	-	-	-	-	-	-	-	-	-	-	55.8
59.1	ft	-	-	-	-	-	-	1,980	2,200	2,200	-	-	-	-	-	-	-	-	-	-	59.1
62.3	ft	-	-	-	-	-	-	-	1,540	1,540	-	-	-	-	-	-	-	-	-	-	62.3
65.6	ft	-	-	-	-	-	-	-	-	1,100	-	-	-	-	-	-	-	-	-	-	65.6

# RANGE GRAPH

DIAGRAMA DE CARGA

**TRT 80US**

## Mode 2








# TECHNICAL SPECIFICATIONS







**TRT 80US**

## ESPECIFICACIÓN TÉCNICA

### Boom · Pluma

	<b>5 sections</b> · 5 secciones	
	<b>Three modes</b> · Tres modos	
	<b>Min. / Max.</b> · Min. / Máx.	36.8 ft / 138.1 ft
	<b>Max. main boom</b> · Máx. pluma principal	147.6 ft
	<b>Boom luffing angle range (min. / max.)</b> · Ángulos de elevación de la pluma (min. / máx.)	-2° / +78°
	<b>Boom raising / lowering time<sup>(1)</sup></b> · Tiempo de elevación / descenso de la pluma <sup>(1)</sup>	75 s / 84 s
	<b>Boom extension / retraction time<sup>(1)</sup></b> · Tiempo de extensión / retracción de la pluma <sup>(1)</sup>	135 s / 70 s

### Hoist · Cabrestante

	<b>Hydraulic motor</b> · Motor hidráulico <b>Rope roller device</b> · Sistema de tensado de cable <b>Normally engaged brake</b> · Freno activado en estado normal	
	<b>2 speeds</b> · 2 velocidades	
	<b>Max.<sup>(1)</sup> · Máx.<sup>(1)</sup></b>	260 ft/min.
	<b>Rotational resistant</b> · Antirotación	
		3/4"
		722 ft
	<b>Permissible line pull</b> · Tracción de cable admisible	13,400 lbs

### Upper Structure · Superestructura

		19,620 lbs
	<b>Non stop</b> · Sin fin	360°
	<b>Maximum speed<sup>(1)</sup></b> · Velocidad máxima <sup>(1)</sup>	1 rpm
	<b>Hydraulic motor</b> · Motor hidráulico <b>Planetary reducer</b> · Reductor planetario	



### Cab and Controls · Cabina y controles



#### S-space cab:

**Sliding door** · Puerta deslizante

**Wide visibility** · Amplia visibilidad

**Front and upper window with windscreen wiper** · Luna frontal y superior con limpiaparabrisas

**Upper windows can be opened** · Lunas superiores con apertura

**Tilttable cab** · Cabina abatible

**Fully adjustable seat onto shockproof suspensions** · Asiento totalmente ajustable con suspensión anti-impacto

**Equipped with tilttable arm rests with integrated hand controls for crane operation** · Equipado con apoyabrazos abatible con controles integrados para operación de grúa

**Radio with CD player** · Radio-CD

**Seat belts** · Cinturones de seguridad



**Climatized cab** · Cabina climatizada

**Air-conditioning** · Climatización



**TEOS – Terex Operating System. Electronic control with 10" touch screen display** · TEOS – Sistema Operativo Terex. Control electrónico con pantalla táctil de 10"

**Electro-proportional joysticks** · Joystick electroproporcionados



**Adjustable working LED light outside the cab** · Luz de trabajo LED ajustable en el exterior de la cabina

### Carrier · Chasis



**Cummins QSB6.7 Stage V – Tier 4f** · Cummins QSB6.7 Stage V – Tier 4f

**No. of cylinders** · Nº cilindros

6

**Rated power** · Potencia nominal

225 hp @ 2200 rpm

**Maximum gross torque** · Par de fuerza máx.

875 lbs/ft @ 1300 rpm

**Fuel tank capacity** · Volumen depósito combustible

66 gallons

**Diesel Exhaust Fluid (DEF)** · Fluido para descarga de diesel (DEF)

10 gallons



**4 wheel drive permanent** · Tracción a 4 ruedas permanente



**Front wheel steering** · Dirección en las ruedas delanteras

**Rear wheel steering** · Dirección en las ruedas traseras

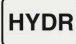


**Four wheel steering concentric** · Dirección en las cuatro ruedas, concéntrica

**Four wheel steering crab** · Dirección en las cuatro ruedas, modo cangrejo

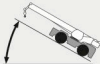
# TECHNICAL SPECIFICATIONS

TRT 80US

## ESPECIFICACIÓN TÉCNICA

	<b>One triple pump: first section piston pump, second and third gear pumps ·</b> Una bomba triple: bomba de pistón en primera sección, bombas de engranajes en segunda y tercera	
	<b>Electric circuit with two batteries 12 V / 140 Ah ·</b> Circuito eléctrico con dos baterías 12 V / 140 Ah	24 V
	<b>Rear axle differential lock ·</b> Bloqueo diferencial eje trasero	




## Vehicle Performance · Prestaciones del vehículo

	<b>Max.(2) · Máx.(2)</b>	> 76 %
	<b>Max.(2) · Máx.(2)</b>	18 mph
	<b>Min. / Max. · Min. / Máx.</b>	-4° F / 113° F

## Tires · Neumáticos

	<b>Earth moving style ·</b> Para movimiento de tierra	26.5
--	---	------



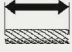





## Options · Opciones

	<b>Single sheave ·</b> Una polea	
	<b>2-section jib ·</b> Jib de 2-secciones: <b>Side stowable ·</b> Almacenable lateralmente <b>Angular offsets ·</b> Inclinación	26.2 ft / 49.2 ft 0° / 20° / 40°
	<b>Cameras ·</b> Cámaras <b>Radio remote controller ·</b> Mando a distancia por radio <b>Telematics ·</b> Sistema telemático	
	<b>Hydraulic motor ·</b> Motor hidráulico <b>Rope roller device ·</b> Sistema de tensado de cable <b>Normally engaged brake ·</b> Freno activado en estado normal	
	<b>2 speeds ·</b> 2 velocidades <b>Max.(1) · Máx.(1)</b>	260 ft/min.

# TECHNICAL SPECIFICATIONS

**TRT 80US**

## ESPECIFICACIÓN TÉCNICA




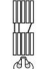
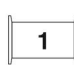



	<b>Rotational resistant</b> · Antirotación	
		3/4"
		722 ft
	<b>Permissible line pull</b> · Tracción de cable admisible	13,400 lbs
	<b>Outrigger control from the ground</b> · Control externo de los apoyos estabilizadores	
	<b>Cummins QSB6.7 Stage IIIA – Tier 3</b> · Cummins QSB6.7 Stage IIIA – Tier 3	
	<b>No. of cylinders</b> · Nº cilindros	6
	<b>Rated power</b> · Potencia nominal	220 hp @ 2200 rpm
	<b>Maximum gross torque</b> · Par de fuerza máx.	700 lbs/ft @ 1500 rpm
	<b>Fuel tank capacity</b> · Volumen depósito combustible	66 gallons
	<b>Kit for engine pre-warming</b> · Kit de precalentamiento del motor	
	<b>Earth moving style</b> · Para movimiento de tierra	
	<b>Spare wheel</b> · Rueda de repuesto	23.5
<b>Emergency engine stop</b> · Parada de emergencia del motor		
<b>Spark arrestor on exhaust pipe muffler*</b> · Parachispas en el silenciador del tubo de escape*		
<b>Anemometer</b> · Anemómetro		
<b>Rear towing hook</b> · Enganche de remolque		
<b>Wooden box for cab protection in sea shipment</b> · Caja de madera para proteger la cabina para el transporte marítimo		
<b>Removable parts disassembling and put into wooden box tied to the crane</b> · Desmontaje de las piezas desmontables y colocación en caja de madera fijada a la grúa		
<b>Anti-corrosive protective waxing for sea shipping</b> · Aplicación de cera de protección para el transporte marítimo		
<b>Special customer paint of all boom elements</b> · Pintura especial en todas las secciones de la pluma		
<b>Special heavy painting suitable for corrosive environments</b> · Pintura especial para ambientes corrosivos		

\* only for engine Stage IIIA Tier 3 · solo para motores Fase IIIA/Tier 3

# TECHNICAL SPECIFICATIONS

**TRT 80US**

## ESPECIFICACIÓN TÉCNICA

								
							Standard	Optional
							Estándar	Opcional
80 USt	6	12	•			•	•	
80 USt	6	12	•		•			•
22 USt	1	3	•	•				•
11 USt	0	1	•	•				•

# NOTES TO LIFTING CAPACITY

**TRT 80US**

## NOTAS SOBRE LA CAPACIDAD DE ELEVACIÓN

**Weight of hook blocks and slings is considered part of the load and must be subtracted from the capacity ratings. Consult operation manual for further details.**

**Note: Data published herein is intended as a guideline only and shall not be construed to warrant applicability for lifting purposes. For actual crane operation refer to the computer charts and the operating manual, both of which are supplied with the crane.**

Los pesos de los ganchos y las eslingas se consideran parte de la carga y tienen que ser restados de las capacidades nominales. Consulte el manual de instrucciones para más detalles.

Nota: Los datos publicados se proporcionan a título informativo, por tanto, no se consideraran vinculantes a los efectos de la garantía de la capacidad de elevación.

Para operar la grúa deben cumplirse las tablas originales y el manual de instrucciones suministrados con la grúa.