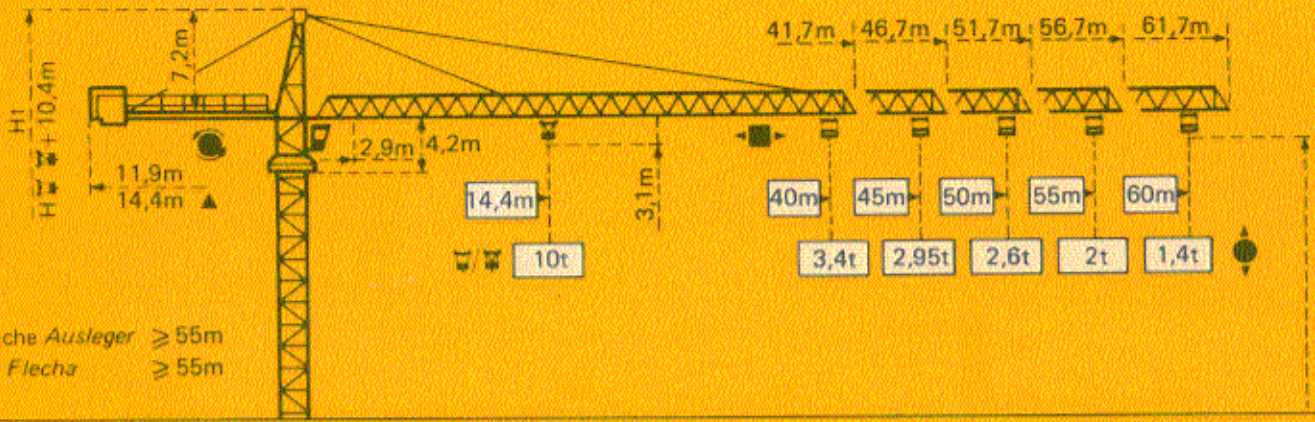


TOPKIT H25 / 14C

POTAIN 



- ▲ Flèche Ausleger $\geq 55m$
- ▲ Jib Flecha $\geq 55m$

Mâtère Mast Mast Mástil

1.6m x 1.6m

Mâtère Mast Mast Mástil

2m x 2m

PA 459

SB459

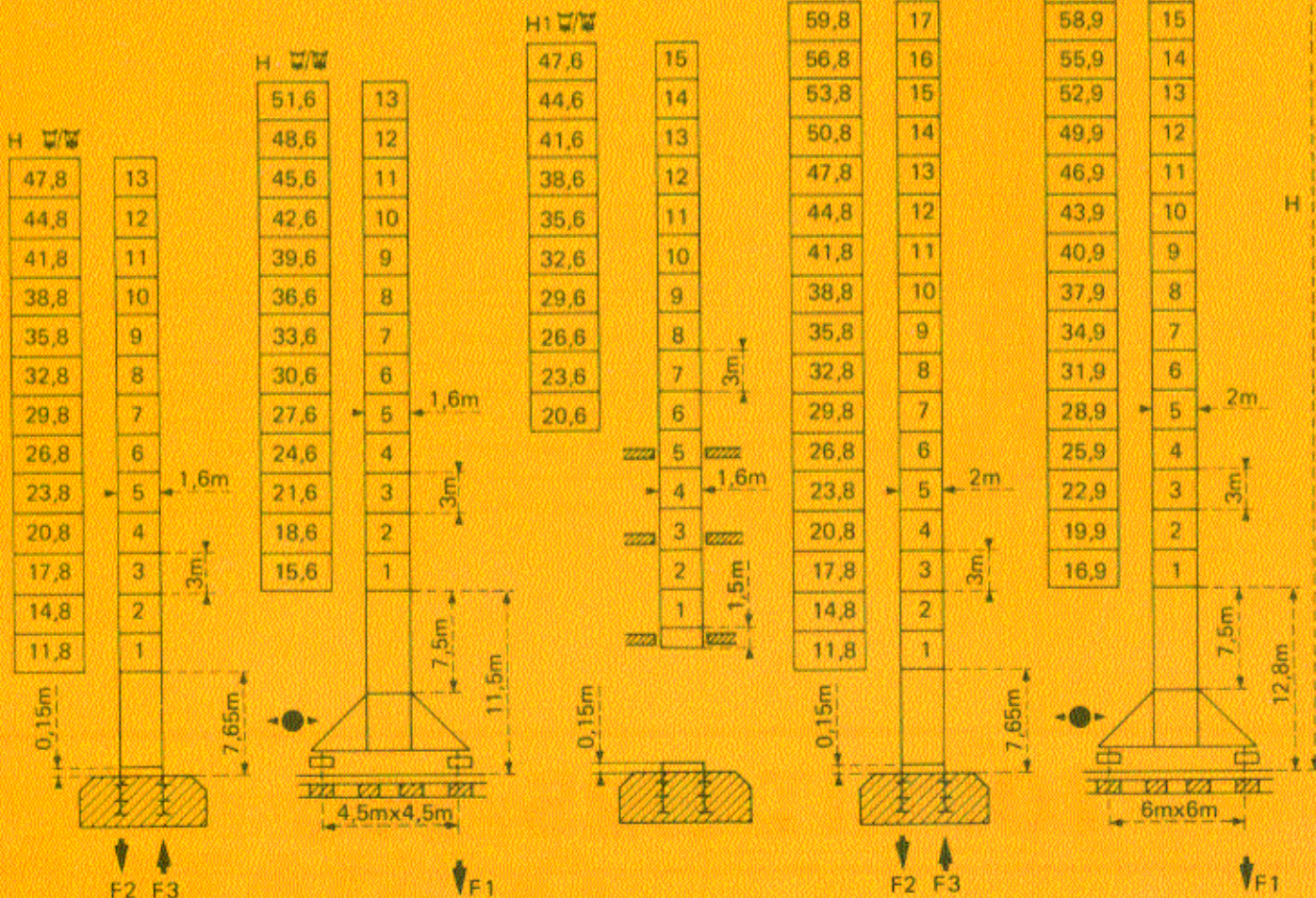
BA 45A

PA 663

VB663

Flèche Ausleger Jib Flecha $\leq 55m$

$$H_{\square} = H_{\square/\square} + 0,7m$$



F = Réactions Eckdrücke Reactions Reacciones

F2 ● 102t ■ 130t

F3 ● 70t ■ 103t

39t

F1 ● 76t ■ 94t

47t

Voir ci-contre
Siehe nebenstehend
See opposite
Ver página opuesta

F2 ● 108t ■ 165t

F3 ● 69t ■ 132t

49,5t

F1 ● 86t ■ 115t

62,5t

Courbes de charges

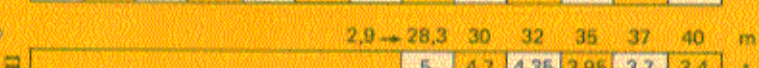
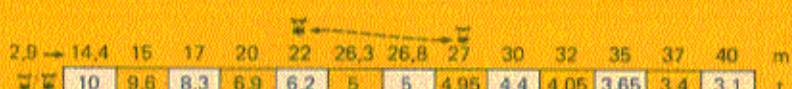
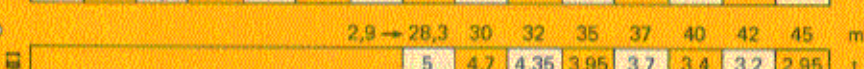
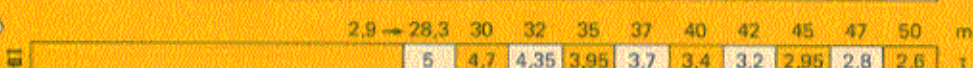
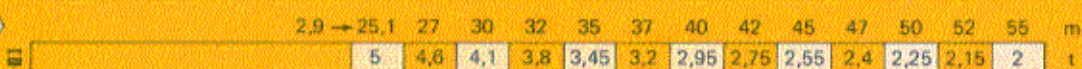
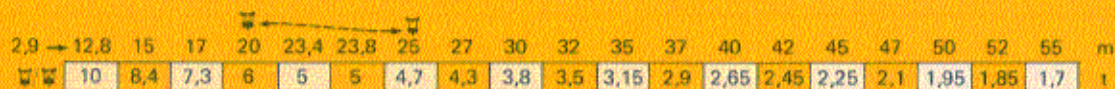
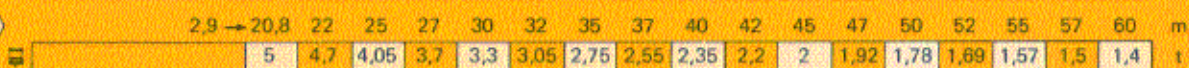
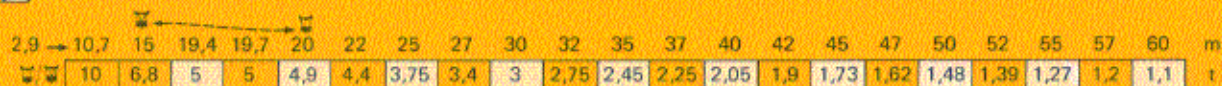
Lastkurven

Load diagrams

Curvas de cargas



Fläche Ausleger Jib Flecha



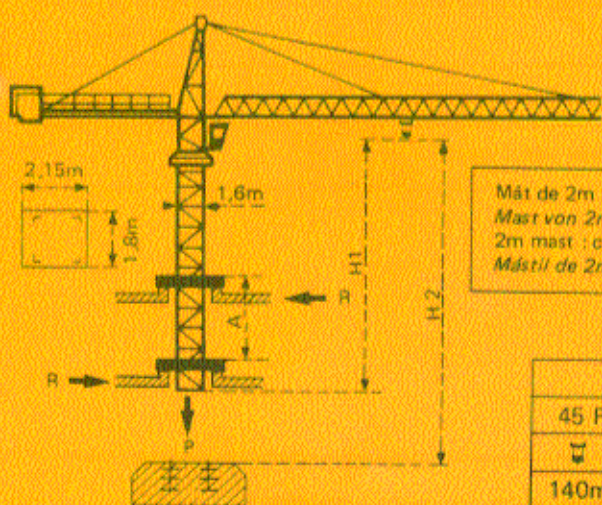
☐ Chariot standard 2/4 brins.
(En cas d'utilisation ☐ déduire
0.1 t aux charges ☐.)
☐ Chariot optionnel 2 brins
uniquement.

☐ Standardlaufkatze 2/4 Stränge.
Bei Einsatz von ☐ ist 0.1 t
der Lasten von ☐ abzuziehen.
☐ Laufkatze in Sonderausführung
mit nur 2 Strängen.

☐ Standard trolley 2/4 fall.
(When using ☐ subtract 0.1 t
from the loads ☐.)
☐ Optional trolley 2 fall only.

☐ Carro standard 2/4 ramales.
(En caso de utilización ☐ quitar
0.1 t de las cargas ☐.)
☐ Carro opcional en 2 ramales
solamente.

Télescopage sur dalles - Ketterkrane im Gebäude
Climbing crane - Telescopage gruas trepadoras

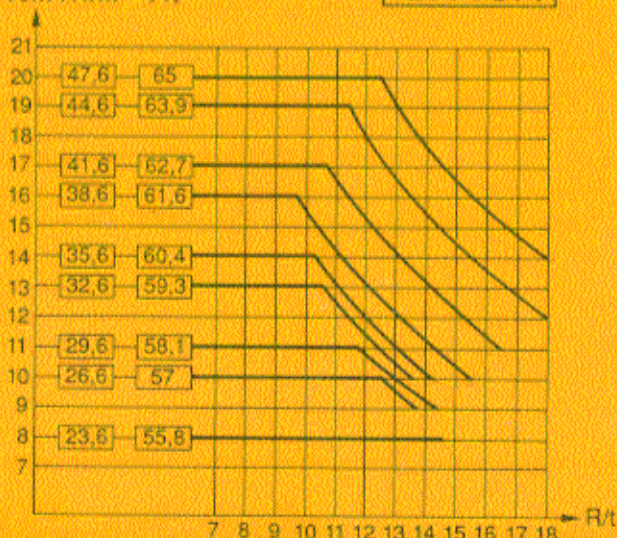


Mât de 2m : nous consulter
Mast von 2m : Auf Anfrage
2m mast : consult us
Mástil de 2m : consultarnos

H2	
45 RCS 25C	
☐	☐
140m	70m

A/m H1/m P/t

BA45A



A Distance entre cadres
H1 Hauteur grue
P Poids de la grue
R Réaction horizontale

A Abstand zwischen den Rahmen
H1 Kranhöhe
P Krangewicht
R Horizontalkräfte

A Distance between collars
H1 Crane height
P Crane weight
R Horizontal reaction













A Distancia entre marcos
H1 Altura grúa
P Peso de la grúa
R Reaccion horizontal

● En service
■ Hors service
☐ A vide sans lest avec
fleche et hauteur maxi-
mum.

● In Betrieb
■ Ausser Betrieb
☐ Ohne Last und Ballast
mit Maximalausleger und
Maximalhöhe.

● In service
■ Out of service
☐ Without load and ballast
with longest jib and maxi-
mum height.

● En servicio
■ Fuera de servicio
☐ Sin cargas, sin lastre con
flecha y altura máxima

				m/min	t		ch-PS hp	kW
Levage Heben Hoisting Elevación	45 RCS 25 C 			0 → 32	5	287 m > 287 m *	45	33
				0 → 64	2,5			
				0 → 16	10			
				0 → 32	5			
Distribution - <i>Katzfahren</i> Trolleying - <i>Distribución</i>		5 D3 V4	15 30 58				5	3,7
Orientation - <i>Schwenken</i> Slewing - <i>Orientación</i>		OMD 45	0 → 0,7 tr/min U/min-rpm				12	8,8
Translation <i>Kranfahren</i> Travelling <i>Traslación</i>	SB 459 	RT 324	12,5-25				2 x 7	2 x 5,2
	R ≥ 10m	TCV 449 ARC H ≤ 33,6m	10 - 50				4 x 6,8	4 x 5
	VB 663 	RT 443 A1 2V	15 - 30				4 x 5	4 x 3,7
	R ≥ 13m	TCV 649 ARC H ≤ 43,9m	10 - 50				4 x 6,8	4 x 5
Réseau - <i>Netzstrom</i> - Mains supply - <i>Red</i>							380 V · 50 HZ	
Puissance électrique nécessaire - <i>Anschlusswert</i> - Necessary electric power - <i>Potencia eléctrica necesaria</i>							RCS : 70 kVA	
Groupe électrogène - <i>Stromaggregat</i> - Generator set - <i>Grupo electrogeno</i>							.	

* Nous consulter - *Auf Anfrage* - Consult us - *Consultarnos*

Conforme à la directive CEE 84/534 sur le niveau acoustique - *In compliance with the EEC 84/534 Instruction on noise level*
Gemäss EWG-Richtlinie 84/534 über Schall-Leistungspegel - *Conforme con la directiva CEE 84/534 sobre el nivel acustico*

NF E52081 - 82

POTAIN

18, rue de Charbonnières, B.P. 173-F 69132 ECULLY Cedex
Tél. 72.20.20.20 - Télex 330 179 - Télex. Export 375 213 -
Fax 72 20 20 00

POTAIN GmbH 6082 MÖRFELDEN WALLDORF
Nordendstr. 79-87 - Postfach 420
Tél. 06 105 704.0 - Télex 4.1857 45

TOPKIT H25 / 14C

Réf. 1989.18 KZN 1