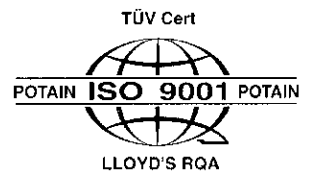


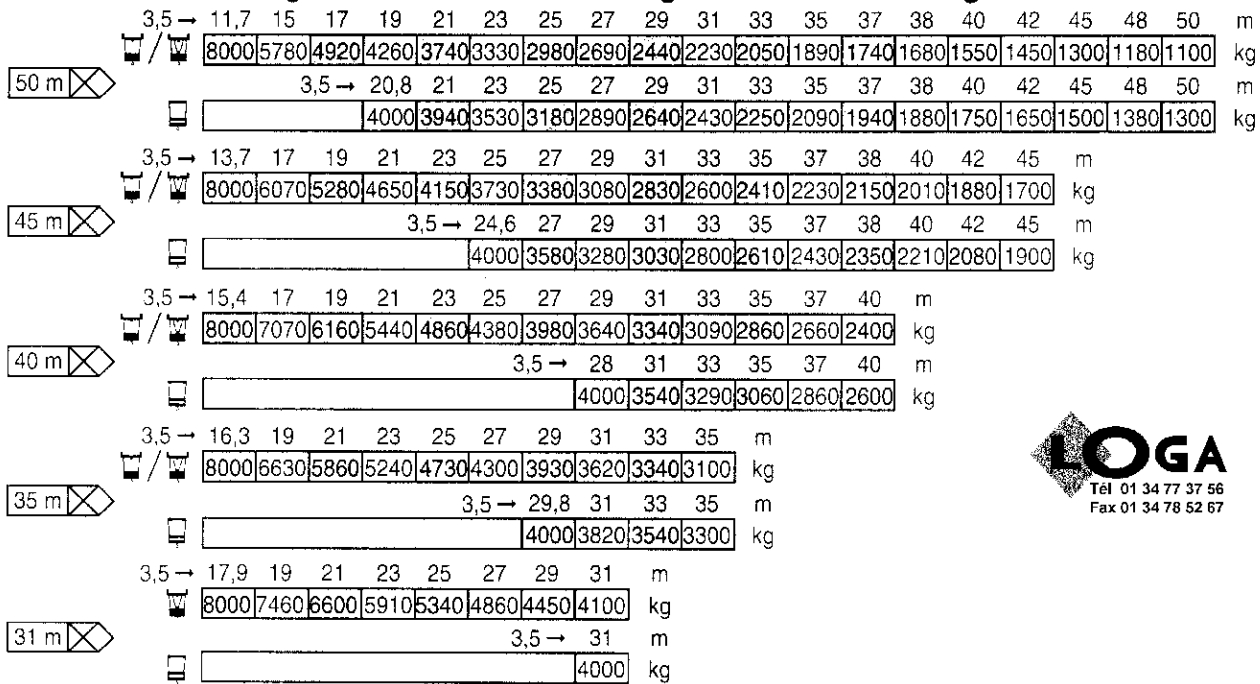
GTMR 386 A

LIF 1

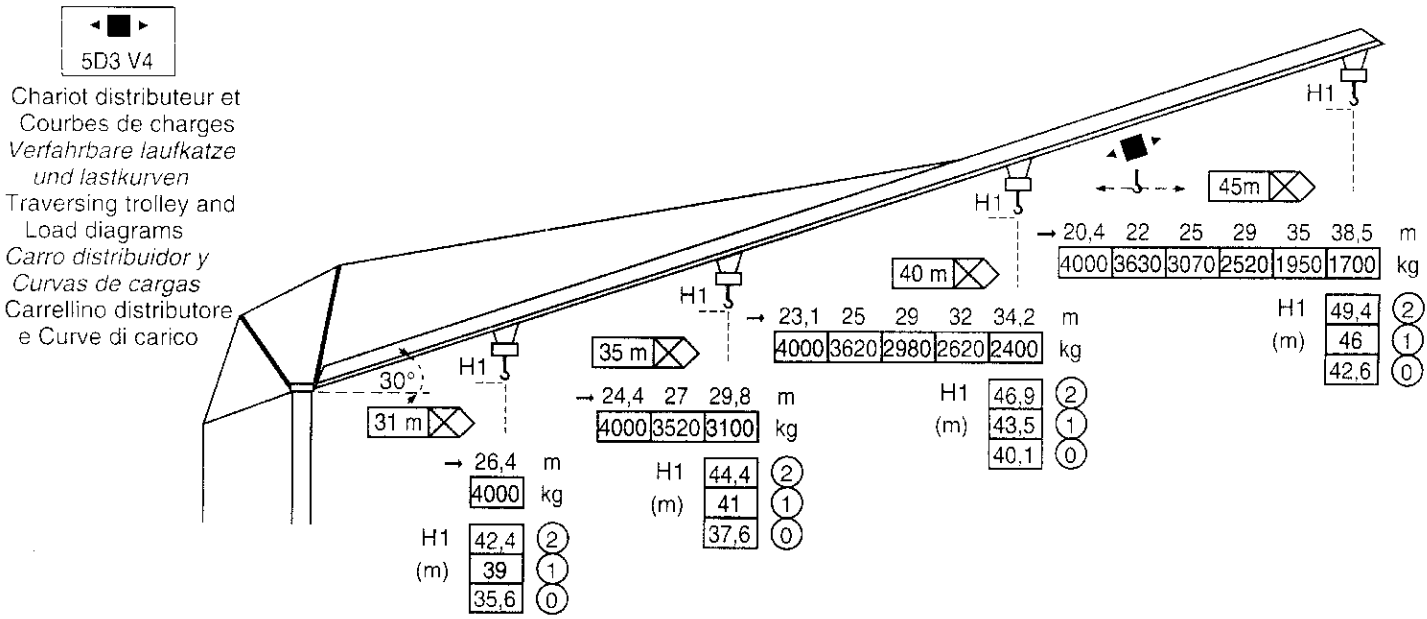
POTAIN  [®]



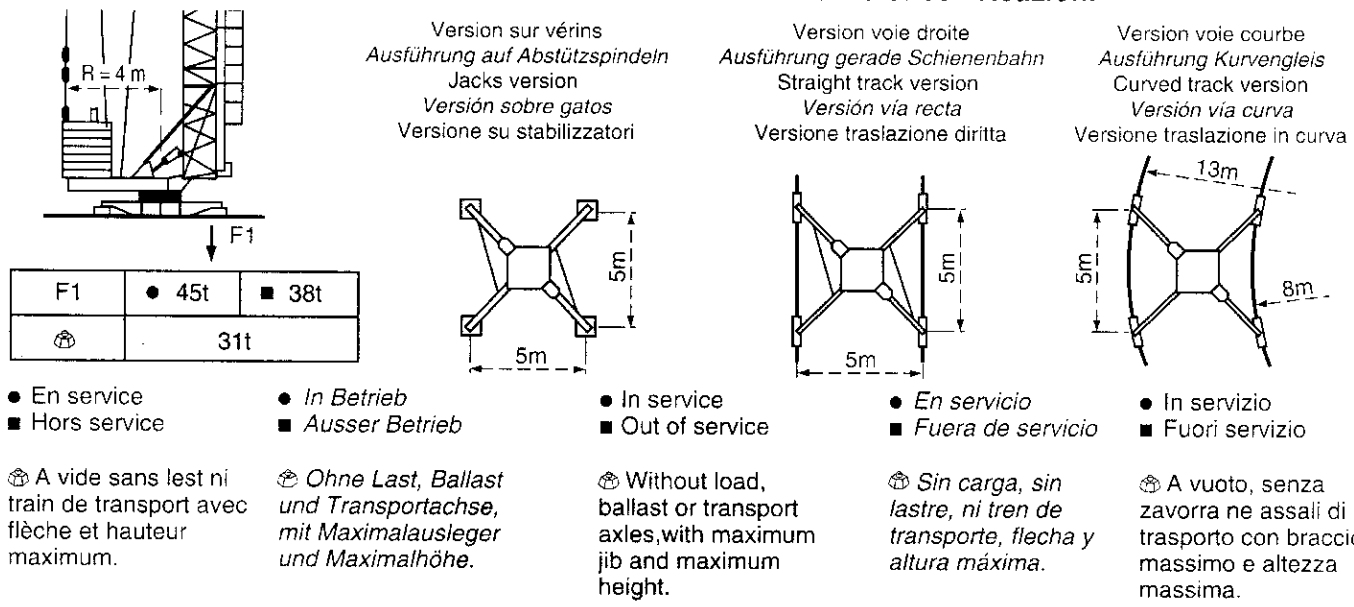
Courbes de charges - Lastkurven - Load diagrams - Curvas de cargas - Curve di carico


















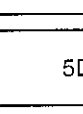
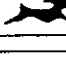
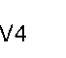


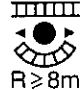
Flèche relevée - Ausleger in Steilstellung - Luffing jib - Flecha izada - Braccio impennato



Réaction - Eckdrücke - Reactions - Reacciones - Reazioni



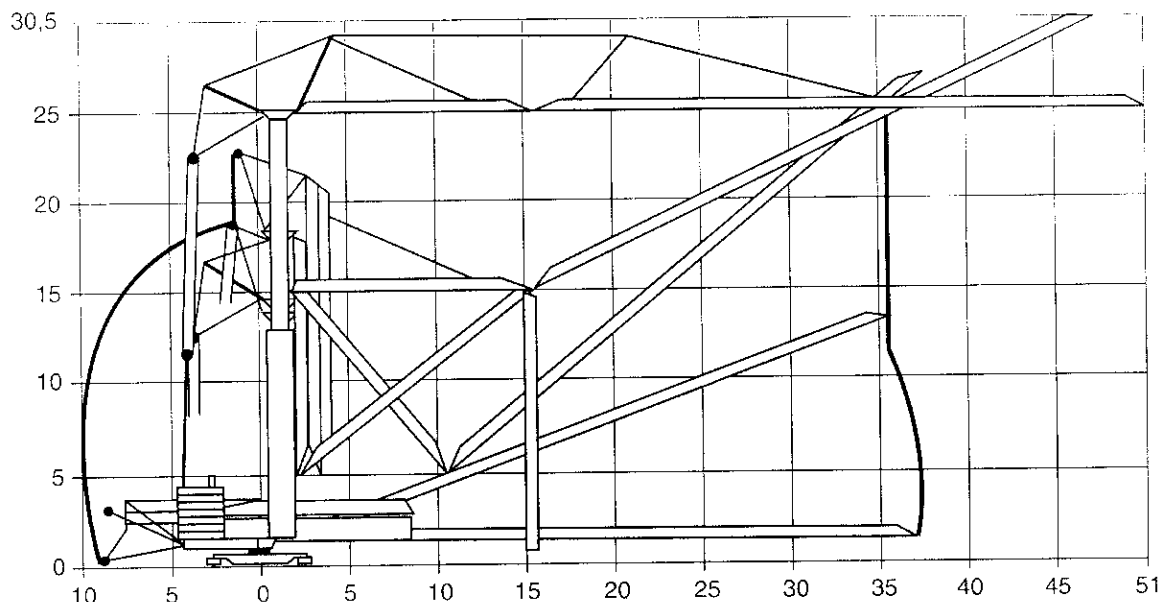
Mécanismes - Antriebe - Mechanisms - Mecanismos - Meccanismi

| | | | | m/min | kg | ch -PS hp | kW | |
|--|---|--|---|---|------------------|------------------------|-----|------|
|  <p>Tél 01 34 77 37 56 Fax 01 34 78 52 67</p> <p>Levage Heben Hoisting Elevación Sollevamento</p> | 33 PC 20  |  |  | 5,4 | 4000 | 33 | 24 | |
| | | |  | 30 | 4000 | | | |
| | |  |  | 60 | 2000 | | | |
| | | |  | 2,7 | 8000 | | | |
| | | 33 LVF 20  |  |  | 5,4 | | | 4000 |
| | | | |  | 31 | | | 4000 |
| |  | |  | 62 | 2000 | | | |
| | | |  | 2,7 | 8000 | | | |
| |  | |  | 15,5 | 8000 | | | |
| | | |  | 31 | 4000 | | | |
| | Distribution - <i>Katzfahren</i> - Trolleying <i>Distribución</i> - Distribuzione |  | 5D3 V4 | 15-30-58 | | | 5,5 | 4 |
| | Orientation - <i>Schwenken</i> - Slewing <i>Orientación</i> - Rotazione |  | RCV 62 | 0 → 0,8 tr/min - U/min - rpm | | | 8 | 5,9 |
| Translation - <i>Kranfahren</i> - Travelling <i>Traslación</i> - Traslazione |  R ≥ 8m | Standard | 25 | | | 2x4 | 2x3 | |
| Réseau - <i>Netzstrom</i> - Mains supply - <i>Red</i> - Rete elettrica | | | | | CEI 38 IEC 38 | 400V(+6%-10%) 50 Hz | | |
| Puissance électrique nécessaire - <i>Anschlusswert</i> - Necessary electric power <i>Potencia electrica necesaria</i> - Potenza elettrica necessaria | | | | | 50 kVA | | | |
| Groupe électrogène - <i>Stromaggregat</i> - Generator set - <i>Grupo electrogeno</i> - Gruppo elettrogeno | | | | | * | | | |

*Nous consulter - *Auf Anfrage* - Consult us - *Consultarnos* - Consultateci

Conforme aux directives CEE 84/534 et 87/405 sur le niveau acoustique - *Gemäss EWG-Richtlinien 84/534 und 87/405 für den Schall- Leistungspegel*
In compliance with the EEC 84/534 and 87/405 Instructions on noise level - *Conforme con las directivas CEE 84/534 y 87/405 sobre el nivel acustico*
Conforme alle direttive CEE 84/534 e 87/405 sul livello acustico

Montage - Montage - Erection - Montaje - Montaggio

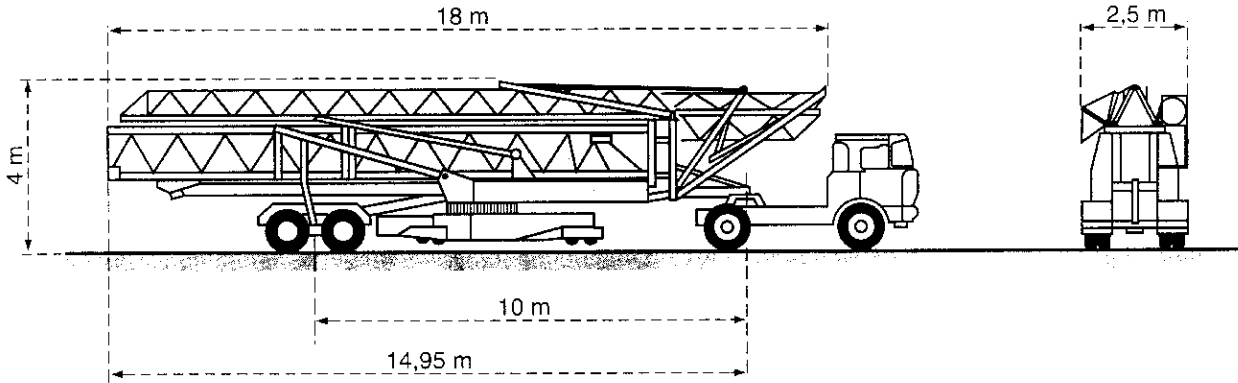


POTAIN  GTMR 386 A

Transport - *Transport* - Transport - *Transporte* - Trasporto



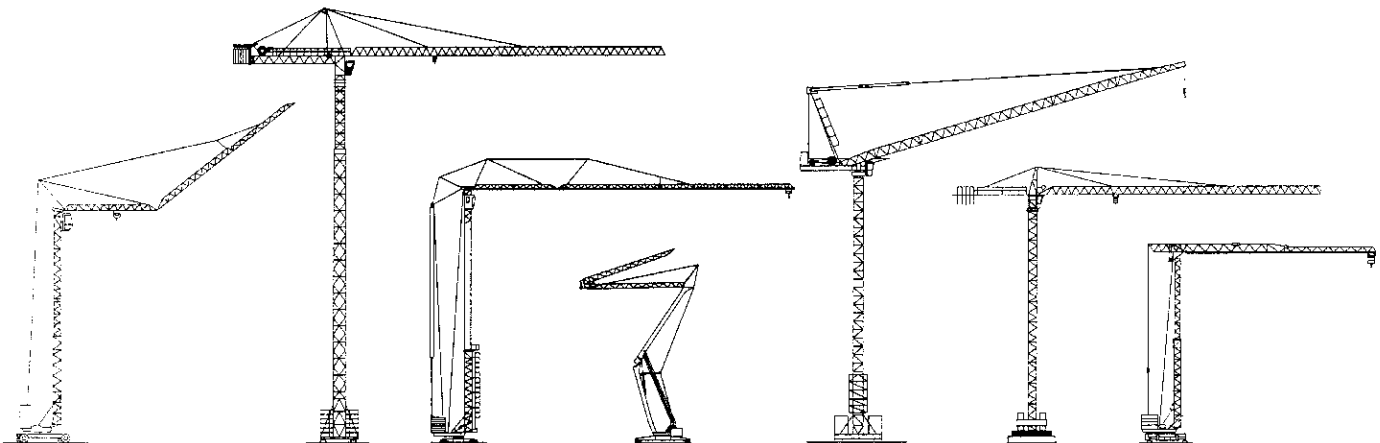
S4/46A (25 km/h)
S5A/82B (60-80 km/h)



Version semi-portée
Ausführung als Sattelaufliieger
Tractor towed version
Versión en semi-remolque
Versione semi rimorchio



NF E 52081 - 82
DIN 15018.H1 B3



Document pour usage commercial uniquement - *Benutzung dieser Unterlagen nur für Verkaufszwecke* - Document for commercial use only -
Documento para uso comercial unicamente - Documento per uso commerciale solamente

Copyright.Reproduction interdite © POTAIN 1994

POTAIN

GRUPE *LEGRIS* INDUSTRIES

18.Rue de Charbonnières, B.P. 173-F 69132 ECULLY Cedex
Tél. 72.20.20.20 - Télèx 375 213 - Fax 72.20.20.00

| | | |
|-----------------|---------------|---------------------|
| POTAIN GmbH | Deutschland | Tel : 06.105.704.0 |
| POTAIN U.K. | Great Britain | Tel : 0895.44.52.61 |
| Simma POTAIN | Italia | Tel : 02.97.96.71 |
| POTAIN Portugal | Portugal | Tel : 02.968.08.89 |

GTMR 386 A

Réf. 1994.44 LIF 1