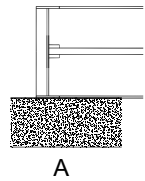
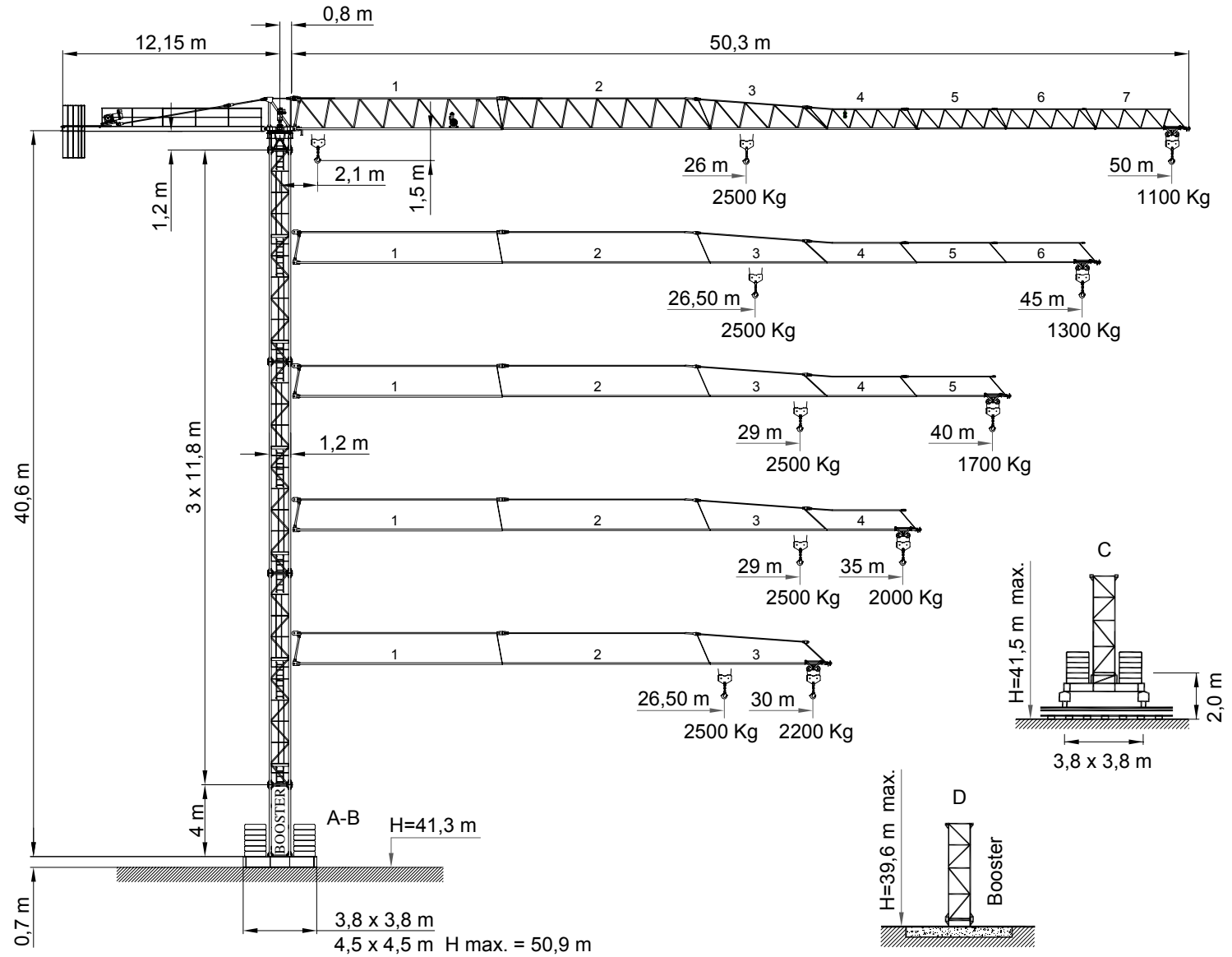
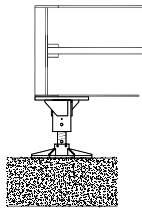




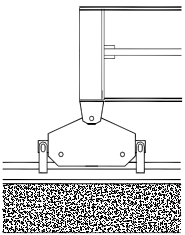
TL50 5T



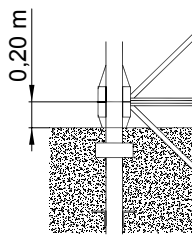
A



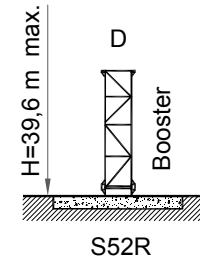
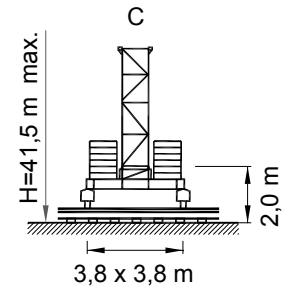
B



C



D



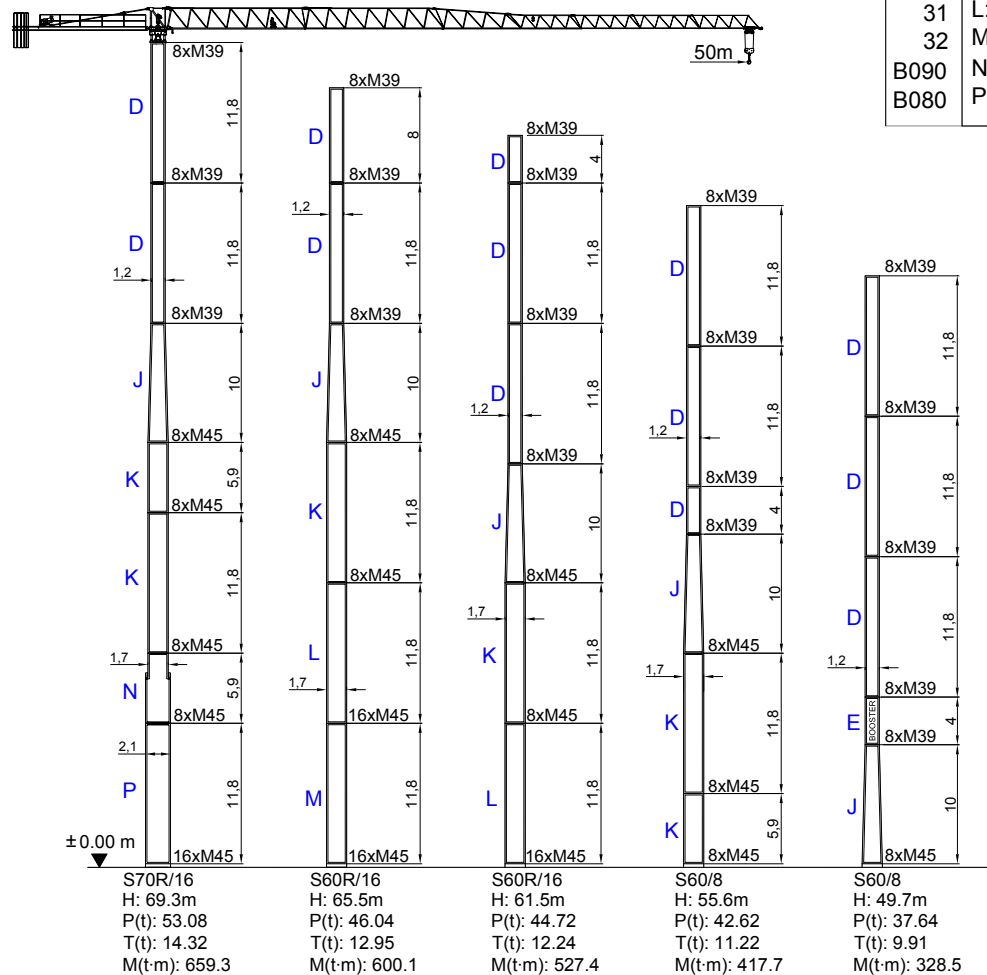
DIN/FEM CE

DIN 15018 FEM 1001-98
According to EC 98/37 instruction

Curvas de cargas
Load diagrams
Lastkurven
Courbes de charges
Curve di carico

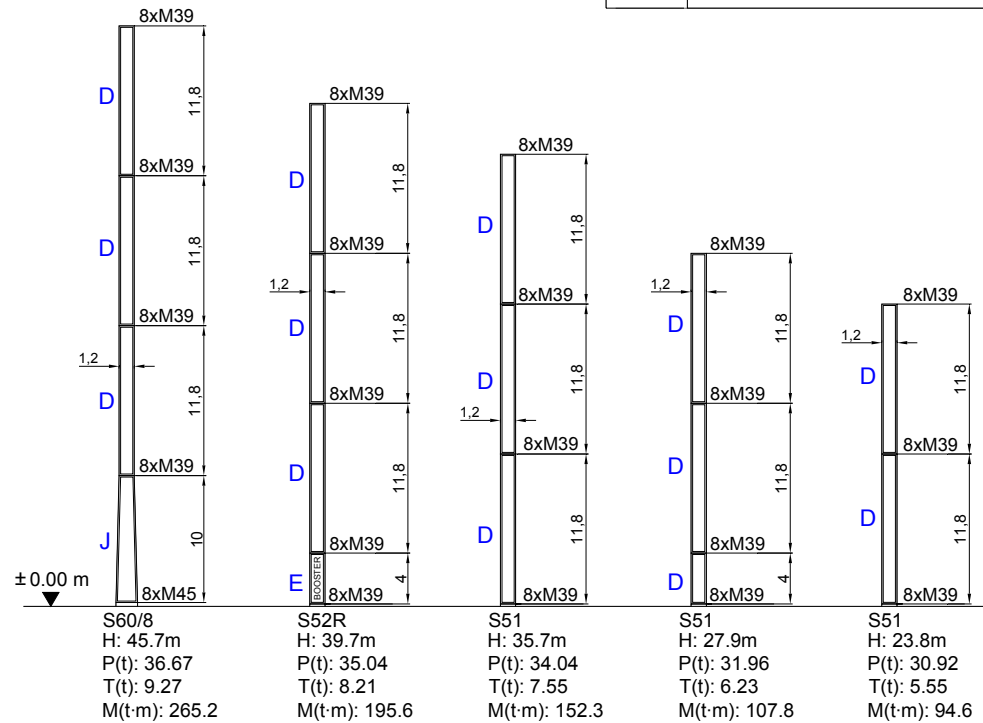
50 m 	18	20	24	25	26	28	30	33	35	37	39	40	43	45	48	50	m		
	2500	2500	2500	2500	2500	2293	2110	1878	1746	1629	1524	1476	1344	1266	1162	1100	Kg		
45 m 	9	12	15	15,3	18	21	24	27	30	33	35	38	40	43	45	48	50	m	
	4000	4000	4000	4000	3601	2995	2546	2200	1926	1702	1575	1409	1313	1186	1111	1010	950	Kg	
40 m 	18	20	24	25	26	26,5	28	30	33	35	37	39	40	43	45	m			
	2500	2500	2500	2500	2500	2500	2346	2160	1924	1789	1670	1563	1513	1379	1300	Kg			
35 m 	9	12	15	16,8	18	21	24	27	30	33	35	38	40	43	45	m			
	4000	4000	4000	4000	3700	3080	2620	2266	1984	1755	1625	1455	1357	1227	1150	Kg			
30 m 	18	20	24	25	26	28	29	30	33	35	m								
	2500	2500	2500	2500	2500	2500	2500	2410	2151	2003	1872		1754	1700	Kg				
25 m 	9	12	15	18	18,5	21	24	27	30	33	35	38	40	m					
	4000	4000	4000	4000	4000	3454	2946	2554	2243	1990	1846	1658	1550	Kg					
20 m 	18	20	24	25	26	28	29	30	33	35	m								
	2500	2500	2500	2500	2500	2500	2500	2406	2147	2000	Kg								
15 m 	9	12	15	18	18,5	21	24	27	30	33	35	m							
	4000	4000	4000	4000	4000	3461	2952	2559	2248	1994	1850	Kg							
10 m 	18	20	24	25	26	26,9	28	30	m										
	2500	2500	2500	2500	2500	2500	2389	2200	Kg										
5 m 	9	12	15	17,2	18	21	24	27	30	m									
	4000	4000	4000	4000	3811	3175	2703	2339	2050	Kg									

Mástil / Reacciones
Masts / Reactions
Maste / Eckdrücke
Mat / Réactions
Torre / Reazioni






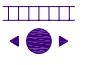



Mástil / Reacciones
 Masts / Reactions
 Maste / Eckdrücke
 Mat / Réactions
 Torre / Reazioni




20	D: 50TL 1.20 M39/M39 8/8
25	E: BOOSTER/HEM 1.20 M39/M39 8/8
25	F: CAMPANA 4m 1.20/1.50 M39/M42 8/8
38	J: CAMPANA 10m 1.20/1.70 M39/M45 8/8
33	K: S17 1.70 M45/M45 8/8
31	L: S17 1.70 M45/M45 16/8
32	M: S17R 1.70 M45/M45 16/16
B090	N: S17-S21 M45/M45 8/8
B080	P: S21 M45/M45 16/8







**Mecanismos
Mechanisms
Antriebe
Mécanismes
Meccanismi**

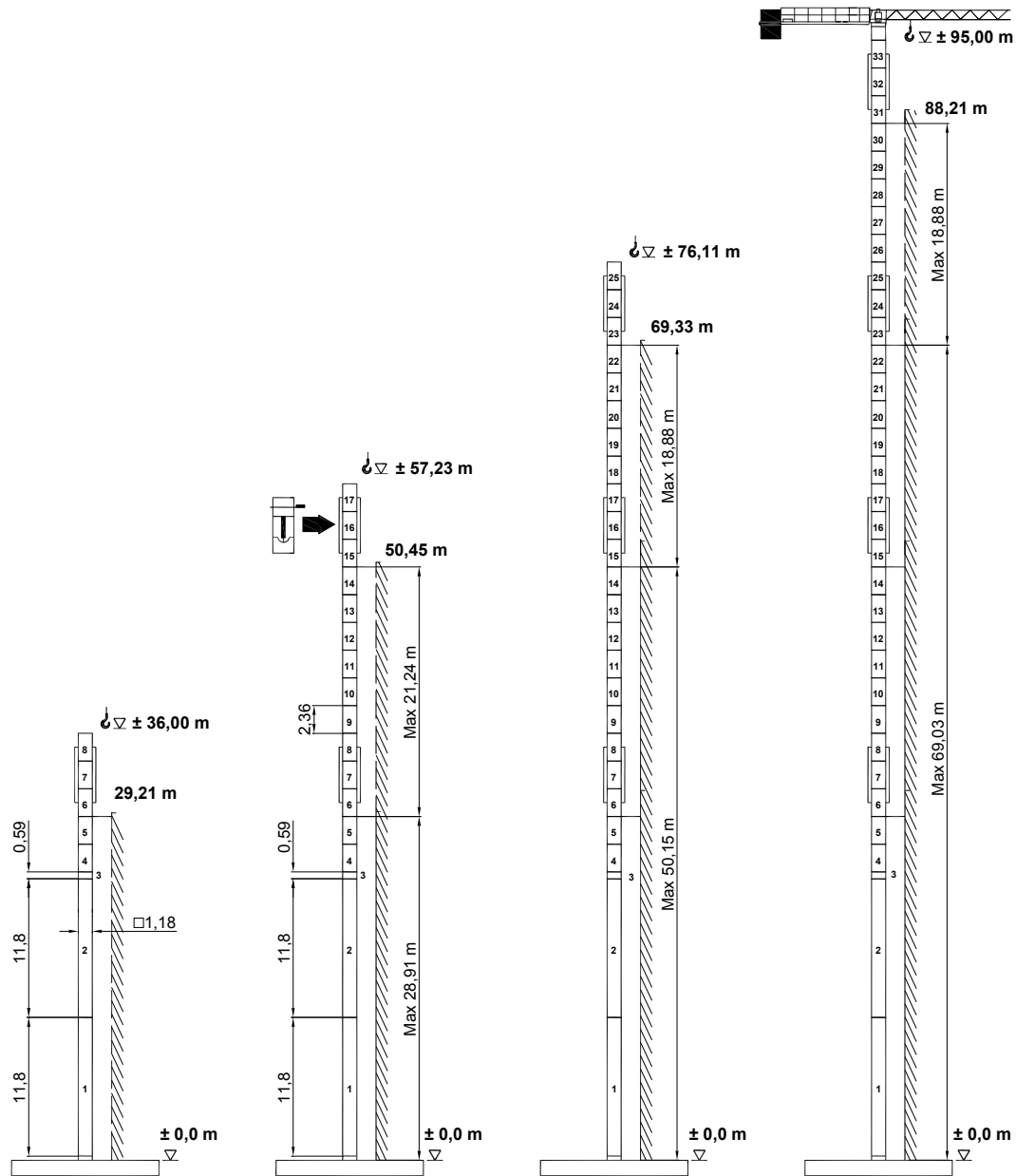
15 Hp (11,5 Kw)							
	m/min	8	29	58	4	15	30
	Kg	2500	2500	1000	4000	4000	2500
	Kw	11,5	11,5	11,5	11,5	11,5	11,5
	m/min	30 / 60			30 / 60		
	Kw	1,1 / 1,8			1,1 / 1,8		
	r.p.m	0,3	0,6	0,9	0,3	0,6	0,9
	Nm	1 x 65			1 x 65		
	m/min	20			20		
	Kw	2 x 2,2			2 x 2,2		

	400 V 50 Hz	31 kVA
---	----------------	--------


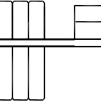
* 25 Hp (18,5 Kw)							
	m/min	8	31	62	4	16	32
	Kg	2500	2500	1500	4000	4000	2500
	Kw	18,5	18,5	18,5	18,5	18,5	18,5

- * Opcional / Optional / Opzionale /
-  Elevación / Hoisting / Heben / Levage / Sollevamento
-  Distribución / Trolleying / Katzfahren / Distribution / Diritribuzione
-  Orientación / Slewing / Schwenken / Orientation / Rotazione
-  Traslacion / Travelling / Schienenfahren / Translation / Traslazione

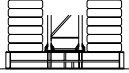
Telescopaje gruas
 trepadoras
 Climbing crane
 Kletterkrane im
 Gebäude
 Téléscope sur
 dalles
 Gru in cavedio



Bloque de contrapeso
Counterweight blocks
Gegengewichtsblöcke
Bloc de contrepoid
Blocco di contrappeso

	50 m		45 m			40 m		35 m		30 m	
	A	B	A	B	C	A	B	A	B	A	B
	3	2	3	1	1	3	1	2	2	2	1
	9700 Kg		9150 Kg			8300 Kg		7400 Kg		6000 Kg	

Bloque lastre de base
Base ballast block
Grundballastblöcke
Bloc de lest de base
Blocco di zavorra alla base

	24,60 m	28,60 m	36,60 m	40,60 m
3,8 x 3,8 m	38 t	45,6 t	76 t	76 t
4,5 x 4,5 m	-	-	-	-

			L (m)	W (m)	H (m)	Kg
Pluma tramo primero / Jib heel section Ausleger-Anlenkstück / Pied de flèche Settore articolato di braccio		1	11,74	1	1,7	1544
Elemento intermedio de pluma Intermediate jib section / Ausleger-Zwischenstück Elément interm. de flèche / Spezzone di braccio		2	11,74	1	1,7	894
		3	6,5	1	1,31	488
		4	5	1	1,16	312
		5	5	1	1,16	223
		6	5	1	1,16	176
		7	5	1	1,16	154
	Contrapluma / Counter-jib Gegenausleger / Contre-flèche Controbraccio			11,49	0,28	1,65
Elemento de torre / Tower section Turmstück / Elément de mât Elemento di torre			11,8	1,2	1,38	3000
			4,0	1,2	1,38	1100
Bloque de contrapeso / Counterweight blocks Gegengewichtsblöcke / Bloc de contrepoids Blocco di contrappeso		A	2,94	0,30	1,25	2300
		B	2,94	0,18	1,25	1400
		C	1,70	0,18	1,25	850
Bloque lastre de base / Base ballast block Grundballastblöcke / Bloc de lest de base Blocco di zavorra alla base			4,4	1,2	0,3	3800
Gancho y Carro / Hook and Trolley Lasthaken - Laufkatze / Crochet - Chariot Gancio e Carrello			0,75	0,12	1,40	160
			0,96	1,10	0,62	120
Cabeza de torre / Tower head Turmspitze / Porte - flèche Testa di torre			2,94	1,8	1,7	3000
Viga principal base / Main base beam Hauptträger für fundamentkreuz Poutre de châssis de base Trave principale della base			5,72	0,67	0,65	1560
Semiviga secundaria base / Half base beam Halbträger für fundamentkreuz semipoutre de châssis de base Semitrave secundaria della base			2,77	0,45	0,665	1500

ESPECIFICACIONES SUJETAS A MODIFICACIONES SIN PREVIO AVISO.

Specifications subject to modification without notice.

Obiges kann ohne berstaendigung geaendert werden.

Specifications susceptibles de modification sans avis préalable.

Specifiche suscettibili di variazioni senza preavviso.

DECLINAMOS TODA RESPONSABILIDAD DERIVADA DE LA INFORMACION PROPORCIONADA.

This information is supplied without liability.

Sämtliche Angaben erfolgen ohne Gewähr.

Ces renseignements sont sans garantie.

Le indicazioni contenute si intendono salvo errori ed omissioni.