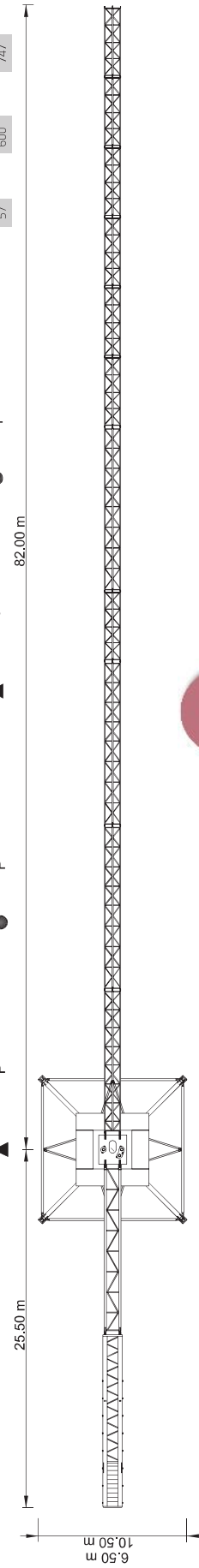
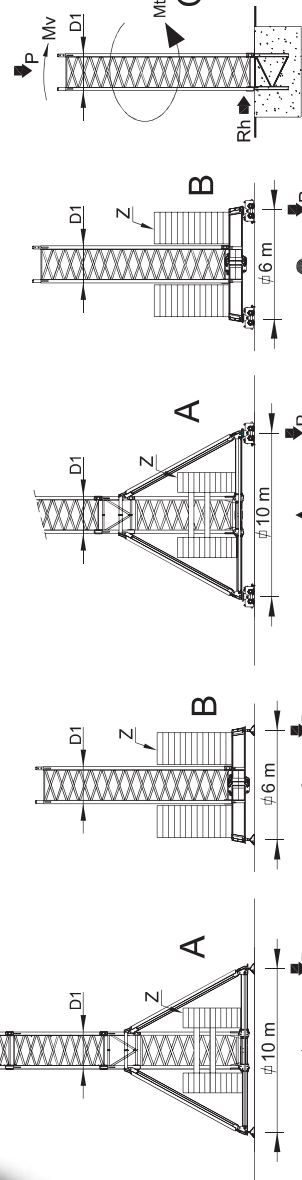


Cargas, Lasten, Charges, Carghi, Yüklei, ГРУЗОВАЯ НАГРУЗКА

Cargas, Lasten, Charges, Carghi, Yüklei, ГРУЗОВАЯ НАГРУЗКА	m	kg	kg/m	Cargas, Lasten, Charges, Carghi, Yüklei, ГРУЗОВАЯ НАГРУЗКА															
				10	15	20	25	28	33	38	43	48	50	55	60	65	70	75	80
28000 kg 1.3x2000 + 2x1000 kg	80m	20000 kg	28.1 m	10000	10000	10000	10000	10000	10000	10000	10000	10000	10000	10000	10000	10000	10000	10000	10000
28000 kg 1.3x2000 + 2x1000 kg	75m	10000 kg	30.5 m	20000	18920	13840	10790	9480	7830	6520	5680	4950	4690	4140	3680	3290	2950	2660	2400
28000 kg 1.3x2000 + 2x1000 kg	70m	10000 kg	33.0 m	20000	20000	15140	11830	10420	8620	7310	6290	5490	5210	4610	4110	3690	3320	3010	
27000 kg 1.3x2000 + 1x1000 kg	65m	10000 kg	35.5 m	20000	20000	17940	13990	12340	10260	8720	7540	6610	6290	5590	5010	4520			
26000 kg 1.3x2000 kg	60m	10000 kg	37.7 m	20000	20000	19070	14980	13220	11000	9370	8120	7130	6790	6040	5420				
25000 kg 1.2x2000+1x1000 kg	55m	20000 kg	40.7 m	20000	20000	20000	15820	13980	11850	9930	8610	7570	7210	6430					
23000 kg 1.1x2000+1x1000 kg	50m	20000 kg	40.8 m	20000	20000	20000	16270	14380	11990	10230	8870	7800	7430						
22000 kg 1.1x2000 kg	48m	20000 kg	40.6 m	20000	20000	20000	16440	14520	12110	10330	8970	7890							
19000 kg 9x2000+1x1000 kg	43m	19000 kg	39.7 m	20000	20000	20000	15640	13810	11510	9810	8500								
18000 kg 9x2000 kg	38m	18000 kg	36.2 m	20000	20000	20000	14450	12750	10610	9030									

Reações, Reactions, Reaktionen
Réactions, Reacciones
Reazioni, Tepkimer
PEAKЦИИ

H	A/B		C					
	Z	P	Mv	P				
m	KN	KN	KNm	KN				
27	1000	300	880	543	3469	830	108	460
30	1000	300	894	552	3549	847	117	460
33	1100	300	933	562	3634	864	126	460
36	1100	300	948	573	3727	880	135	460
39	1100	300	964	595	3826	897	144	460
42	1200	400	1006	631	3931	914	152	460
45	1200	400	1023	643	4043	931	161	460
48	1300	400	1066	656	4163	948	170	460
51	500	500	694	708			179	460
54	500	500	708	747			188	460
57	600	600	747				197	460



	A (mm)	B (mm)	C (mm)	$\frac{A}{B}$	Code
L80	11825	1540	2410	10100	
L81	10185	1460	2560	3700	
L82	12000	1460	2275	3700	
L83	5275	1460	2230	1300	
L84	11970	1460	1950	2200	
L85	5210	1460	1945	800	
L86	5190	1460	1920	650	
L87	5190	1460	1610	520	533.80.30
L88	5150	1460	1595	400	
L89	5140	1460	1590	350	
L90	5070	1460	1590	400	
RS13 RI12	3430	2200	2310	13000	
P5	3400	1450	1160	2000	
CL11	11935	1450	2425	6200	
CL10	12560	1430	675	2800	
CP4	1600	250	1570	2x1000 2000	704.10.00
CP5	1600	250	2950	13x2000 26000	704.20.00
			TOTAL	76120	
D1	6245	2322	2322	4265	533.06.00
D1	3365	2322	2322	2580	533.06.01
D1	2300	2846	2584	2665	533.06.03
D1	2500	2322	2322	2000	533.06.02
D1	8725	800	1600	5500	633.00.01
	4200	380	1600	2x2775 5550	
			TOTAL	11050	

Características . Characteristics . Eigenschaften
 Características . Characteristics . Caratteristiche
 Özellikler . ХАРАКТЕРИСТИКИ

	75 kW
	0 a 90 m/min 0 a 45 m/min
	0 a 1 r.p.m.
	0 a 60 m/min
	0-10 m/min
	120 kVA
	400 V +/- 5% (50/60 HZ)

* Opción . Option . Opzione . Opzime . Seçenek . Опция

