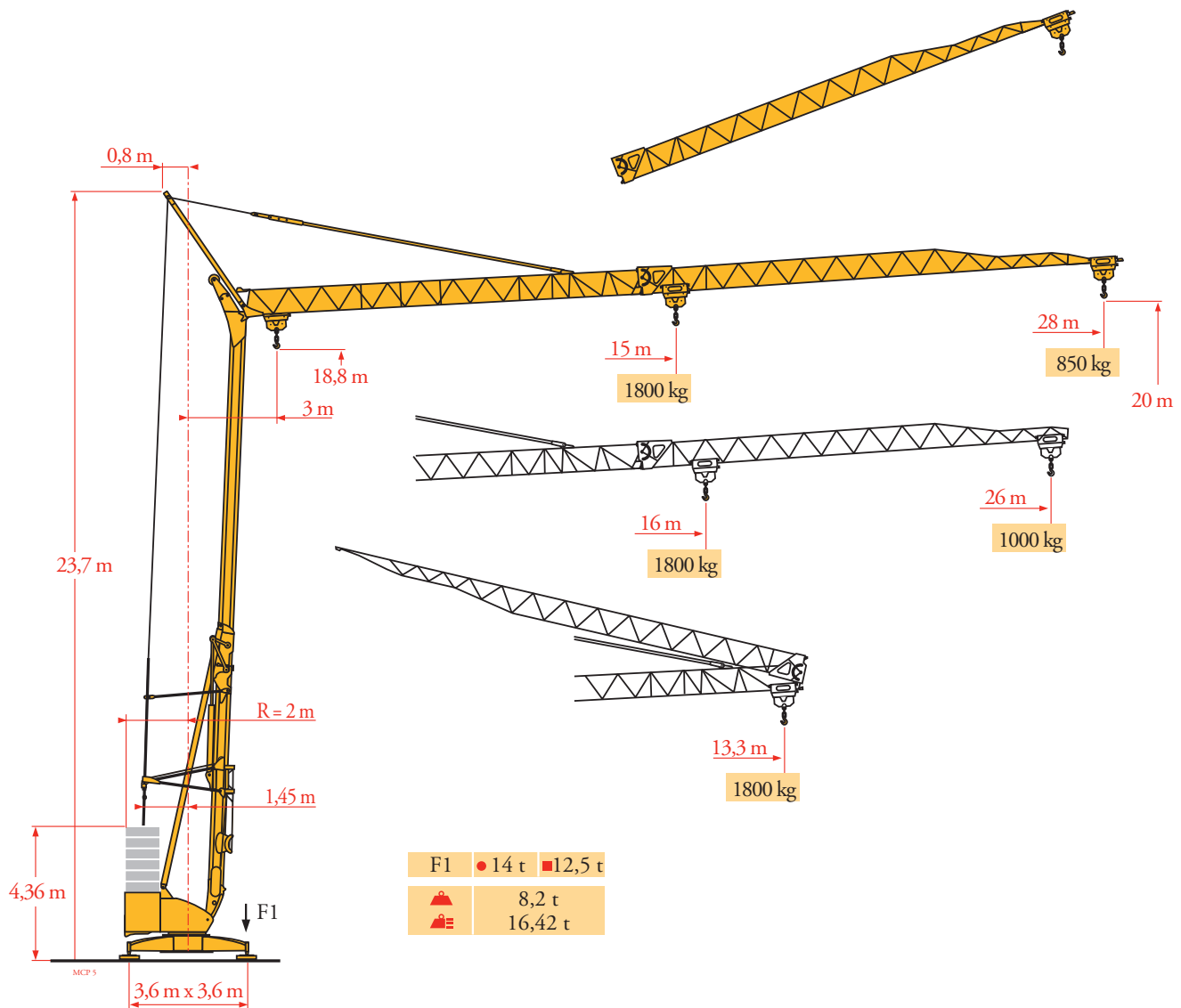


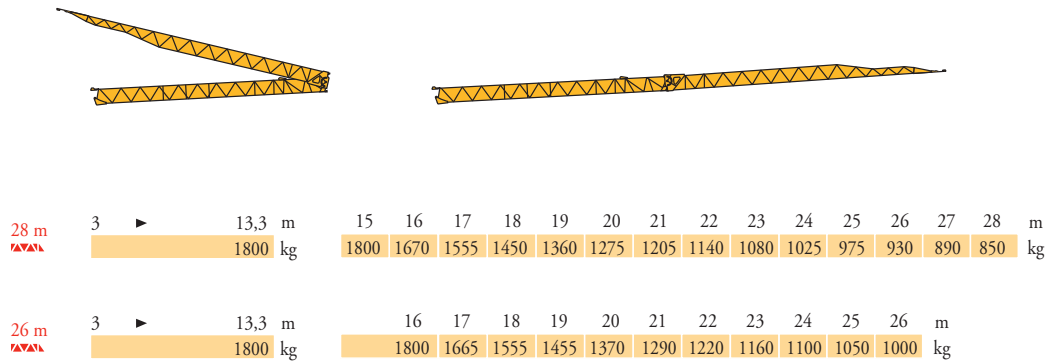
# Potain Igo 22



CE EN14439 C50 - C25  
FEM 1001 - A3

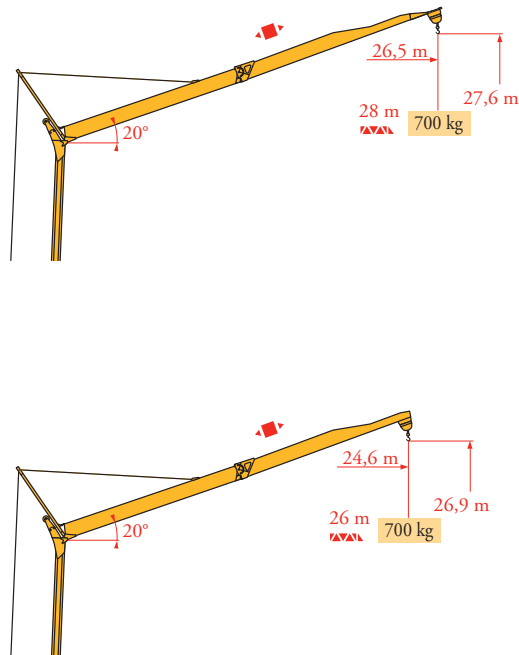
Courbes de charges  
Lastkurven  
Load diagrams  
Curvas de cargas  
Curve di carico  
Curva de cargas  
Диаграммы  
грузоподъемностей

MCP 4



Flèche relevée  
Ausleger in  
Steilstellung  
Luffing jib  
Flecha izada  
Braccio impennato  
Lança inclinada  
Маховая стрела

MCP 4



**FR**  
 Chariot distributeur  
 Réactions en service  
 Réactions hors service  
 A vide sans lest (ni train de transport) avec flèche et hauteur maximum.  
 Poids total du lest.

**DE**  
 Verfahrbare Laufkatze  
 Reaktionskräfte in Betrieb  
 Reaktionskräfte außer Betrieb  
 Ohne Last, Ballast (und Transportachse), mit Maximalausleger und Maximalhöhe.  
 Ballast-Gesamtgewicht.

**EN**  
 Traversing trolley  
 Reactions in service  
 Reactions out of service  
 Without load, ballast (or transport axes), with maximum jib and maximum height.  
 Gross ballast weight.

**ES**  
 Carro distribuidor  
 Reacciones en servicio  
 Reacciones fuera de servicio  
 Sin carga, sin lastre, (ni tren de transporte), flecha y altura máxima.  
 Peso total del lastre.

**IT**  
 Carrellino distributore  
 Reazioni in servizio  
 Reazioni fuori servizio  
 A vuoto, senza zavorra (ne assali di trasporto) con braccio massimo e altezza massima.  
 Peso totale della zavorra.

**PT**  
 Carro distribuidor  
 Reações em serviço  
 Reações fora de serviço  
 Sem carga (nem trem de transporte)-sem lastro com lança e altura máximas.  
 Peso total do lastro.

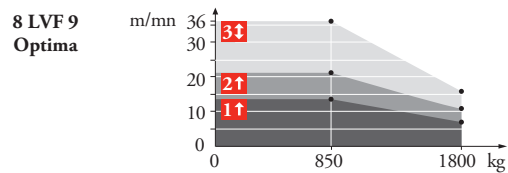
**RU**  
 Грузовая тележка  
 Реакции при работе  
 Реакции в покое  
 Вес без груза, балласта (или транспортных осей), с максимальной длиной стрелы и максимальной высотой.  
 общий вес груза

Mécanismes  
Antriebe  
Mechanisms  
Mecanismos  
Meccanismi  
Mecanismos  
Механизмы

MCP 5

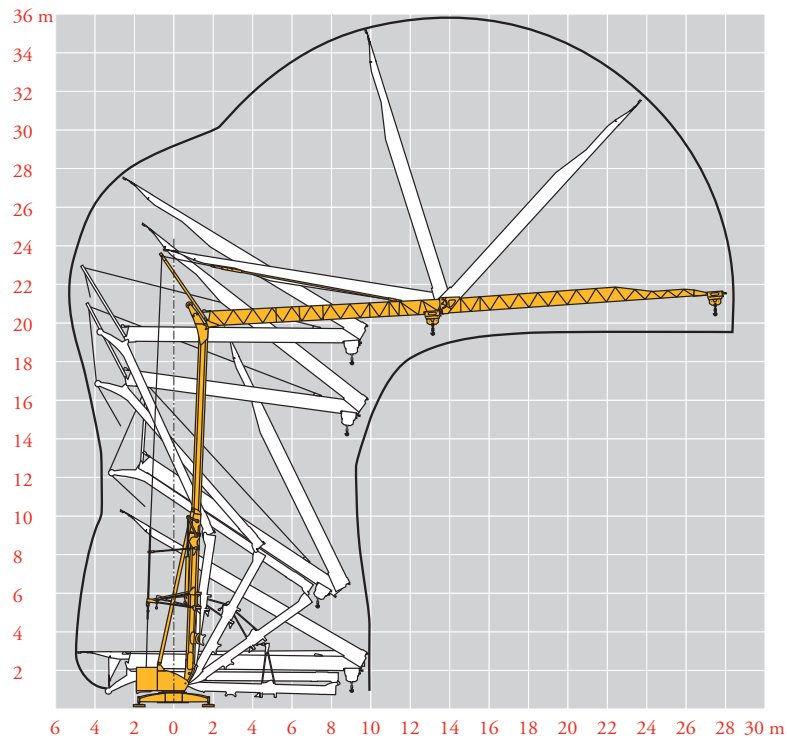
							ch - PS hp	kW
	<b>8 LVF 9 Optima</b>	230 V  20 A <b>1</b>	m/min	↑ 3,5 ↓ 3,5	↑ 7 ↓ 16	↑ 14 ↓ 36	3,3	2,4
			kg	1800	1800	850		
		230 V  32 A <b>2</b>	m/min	↑ 3,5 ↓ 3,5	↑ 11 ↓ 16	↑ 21 ↓ 36	5,2	3,8
			kg	1800	1800	850		
		400 V <b>3</b>	m/min	↓ 3,5	↓ 16	↓ 36	7,5	5,5
			kg	1800	1800	850		
	<b>1 DVF 4</b>	-	m/min	14 → 36 (0 → 850 kg) - 14 → 28 (850 → 1800 kg)			1,5	1,1
	<b>RVF 31</b>	-	tr/min U/min rpm	0 → 0,8			2	1,5

IEC 60204-32	kVA
230 V(+6% -10%) 50 Hz 400 V(+10% -10%) 50 Hz / 480 V(+ 6% -10%) 60 Hz	230 V 20 A: 4,6 kVA 230 V 32 A: 7,4 kVA 400 V/ 480 V: 11 kVA



Montage  
Montage  
Erection  
Montaje  
Montaggio  
Montagem  
Монтаж

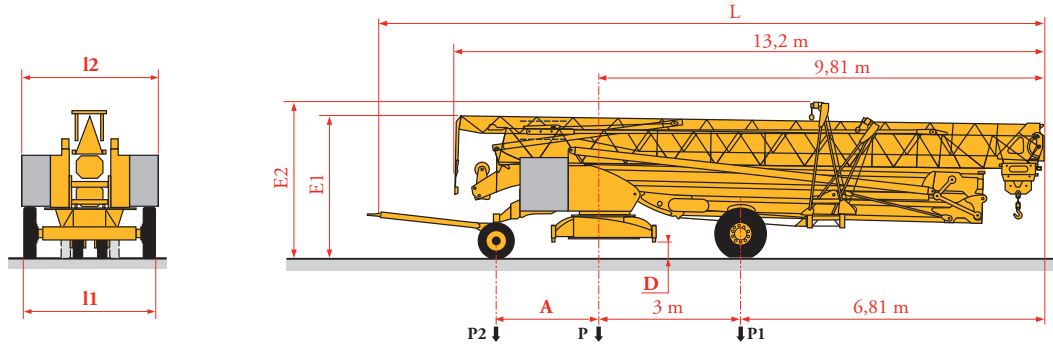
MCP 3



	<b>FR</b>	<b>DE</b>	<b>EN</b>	<b>ES</b>	<b>IT</b>	<b>PT</b>	<b>RU</b>
	Levage	Heben	Hoisting	Elevación	Sollevamento	Elevação	Подъем
	Distribution	Katzfahren	Trolleying	Distribución	Distribuzione	Distribuição	Перемещение каретки
	Orientation	Schwenken	Slewing	Orientación	Rotazione	Rotação	Поворот
	50 Hz Monofasé	50 Hz Einphasige	50 Hz Single phase	50 Hz Monofásica	50 Hz Monofase	50 Hz monofásica	Однофазное напряжение 50Hz

Transport  
 Transport  
 Transport  
 Transporte  
 Trasporto  
 Transporte  
 Транспортировка

MCP5



	Km/h	A (m)	D (m)	E1 (m)	E2 (m)	L (m)	I1 (m)	I2 (m)	P (kg)	P1 (kg)	P2 (kg)
DS62/S81	10	2,35	0,36/0,21	3,18/3,03	3,50/3,35	14,48	2,20	2,50	13650	8500	5150
DS61/S125	25	2,45	0,36/0,21	3,18/3,03	3,50/3,35	14,77	2,40	2,50	14355	9165	5190

... \*\*

- FR** Voir documentations techniques.  
**DE** Siehe technische Dokumentation.  
**EN** See technical documentations.  
**ES** Consulte la documentación técnica.  
**IT** Vedere la documentazione tecnica.  
**PT** Consultar documentações técnicas.  
**RU** см. техническую документацию



Document commercial non contractuel. Pour toute information technique se référer à la notice correspondante.

Unverbindliches Vertriebsdokument. Für technische Informationen, siehe die entsprechenden Anweisungen.

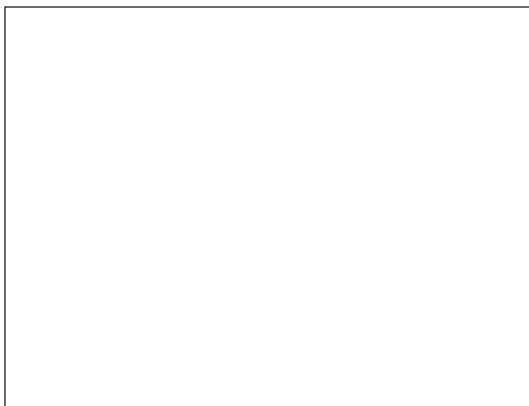
This commercial document is not legally binding. For any technical information, please refer to the corresponding instructions.

Documento commercial no contractual. Para cualquier información técnica, ver la noticia correspondiente.

Documento commerciale non vincolante, per tutte le informazioni tecniche fare riferimento al catalogo istruzioni.

Documento comercial não contractual. Para qualquer informação técnica complementar consultar as respectivas instruções.

Этот коммерческий документ не является юридически обязательным. Для получения технической информации, см. соответствующие инструкции.



Igo 22



**Manitowoc - Americas - World Headquarters**  
 2400 S. 44th Street • Manitowoc • WI 54220 USA  
 Tel: +1 920 684 4410 • Fax: +1 920 652 9778

**Manitowoc - Europe, Middle East & Africa**  
 Ecully, France  
 18, rue de Charbonnières B.P. 173 • 69132 ECULLY Cedex • FRANCE  
 Tel: +33 (0)4 72 18 20 20 • Fax: +33 (0)4 72 18 20 00

**Manitowoc - Asia Pacific**  
 16F Xu Hui Yuan Building,  
 1089 Zhongshan No.2 Road (S) • Shanghai 200030 China  
 Tel: +86 21 6457 0066 • Fax: +86 21 6457 4955

REF: 2005.05 MCP8